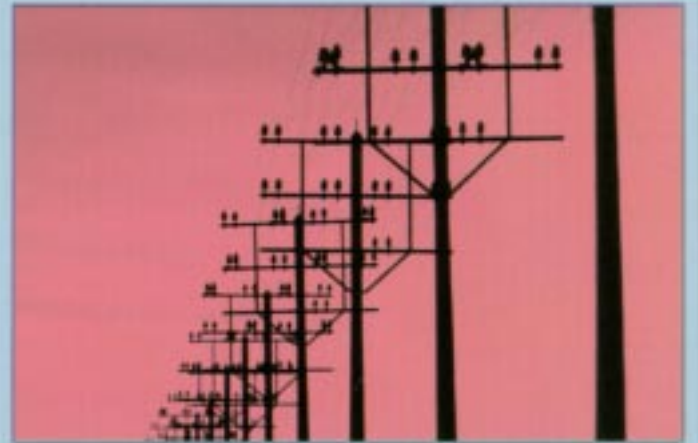


# CERTIFAX

SECURITY MANAGER

**Security  
Management  
& Certificate  
Authority  
for Virtual  
Private Fax  
Networks**



**MANAGES AND  
SAFEGUARDS ANY  
SIZE NETWORK**

**SEE YOUR  
NETWORK  
COME ALIVE**

**MINIMUM TRAINING  
MAXIMUM  
PERFORMANCE**

**Many Users. Many fax machines.  
Many locations.  
One secure technology  
to manage it all.**

**With CSM, security officers can oversee a vast network of domains, devices and users while setting and monitoring policy from one central location.**

---

---

#### **SECURE AUTHENTICATION**

Distance is no longer an issue for timely management of security policy. CSM conveniently connects to any device through a dial up connection over standard telephone lines or through a direct cable connection. Authentication is performed to ensure that only the owning CSM can connect to the device, and once connected, all traffic is encrypted.

#### **CERTIFICATE AUTHORITY**

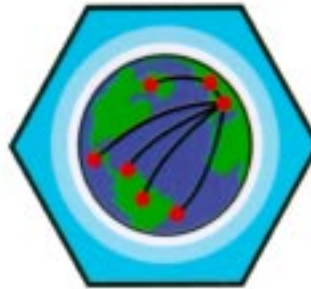
CSM provides Certificate Authority services for the network of devices and is the only means of creating and installing privately certified domains.

- **Each private domain has its own public key certificate signed by the CSM.**
- **Public-key certificates are loaded into each device that has authority to communicate within that domain.**
- **CSM can recertify domain as required.**

- **Initializes & certifies locally or remotely**
- **Manages & Maintain devices remotely**
- **Implements Security standard telephone**
- **All local changes to flagged for review &**
- **Collects and archives**
- **Downloads firmware**
- **Uses industry standa**

#### **SIMPLE CONFIGURATION AND CUSTOMIZATION**

Install wizards guide you through the configuration of domains, devices and users. Wizards allow you to override factory defaults and customize security options as dictated by your policy. Define relationships between domains, devices and users as well as create different permissions for domains and users on each device.



## CERTIFAX devices

s networks &

Policy over  
lines

Security Policy are  
approval

logs

updates to devices

rd GUI interface

### POWERFUL DATABASE MANAGEMENT

CSM maintains a database of configurations for each device under its control giving you immediate access to all critical network information. Any values modified since the CSM's last visit are displayed and flagged with a reminder icon ("ToDo's"). Once the modification is installed, the "ToDo" icon disappears.

### IMMEDIATE KNOWLEDGE AND RESOLUTION OF DEVICE MODIFICATIONS

Once the CSM is connected, it immediately downloads security settings and compares them to settings in the CSM database. Any local modifications made to a device are identified and flagged for your evaluation.

### BUILT-IN SCHEDULES, LOGS AND REPORTS

CSM's built in scheduler offers the flexibility of viewing and auditing critical information at your convenience.

#### The CSM scheduler can:

- Download transaction logs on a pre-determined schedule.
- Collect reports detailing mailbox usage, domain and user directory listings, system configurations and more.
- Initiate diagnostic functions on CERTIFAX devices and return results for later analysis.

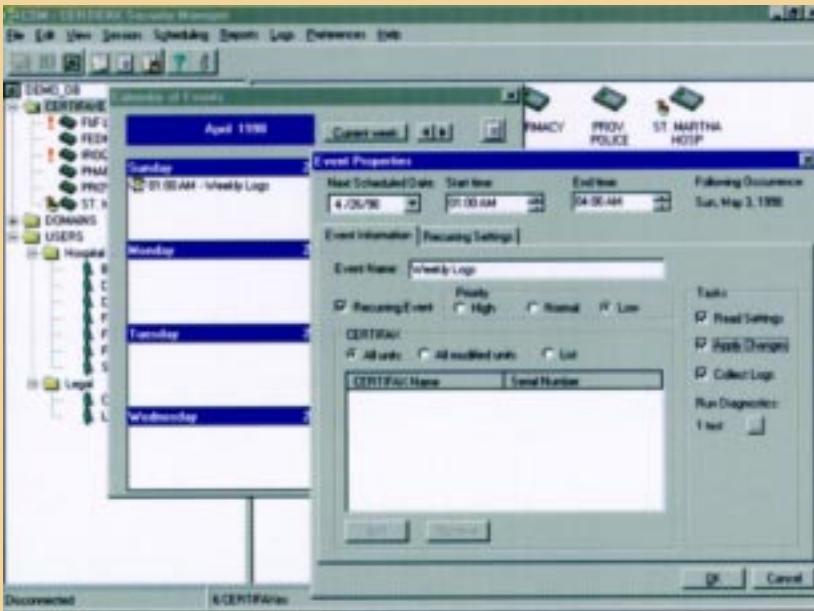
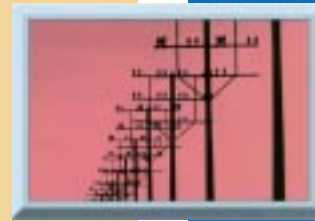
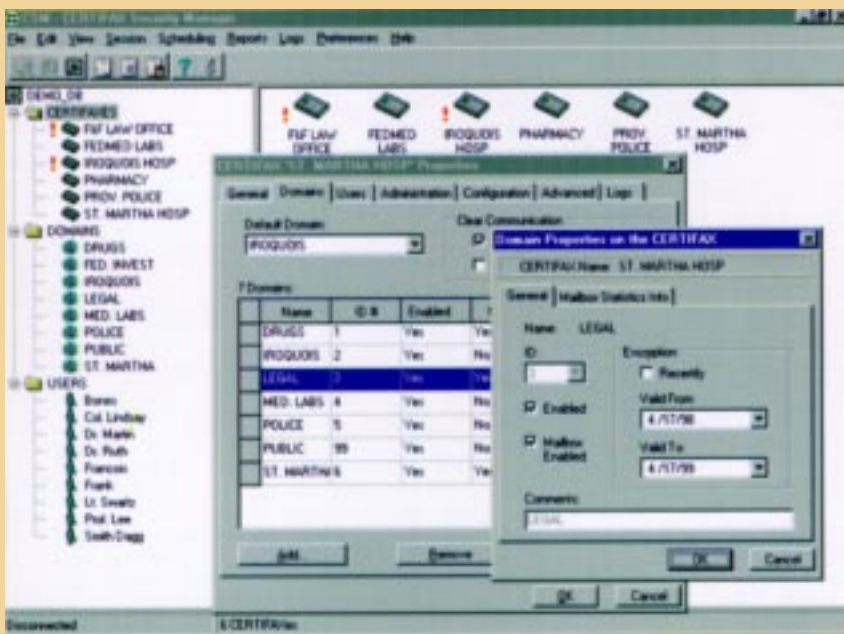
### CSM SYSTEM REQUIREMENTS

- Windows 95 or NT 4.0 and above.
- 7 Megabytes of disk space for program files
- Approximately 100 Kilobytes per CERTIFAX device in the database
- At least 16 Megabytes of RAM.

\* CSM does not require a CERTIFAX device at the server side for connection to network CERTIFAX devices.

USES THE  
CERTICOM  
ELLIPTIC CURVE  
ENGINE -  
THE NEXT  
GENERATION IN  
PUBLIC KEY  
CRYPTOGRAPHY





Certicom, CERTIFAX, CERTIFAX Security Manager (CSM) are trademarks of Certicom Corp.  
 Copyright© 1997, 1998 Certicom Corp.  
 All rights reserved.



17817 Davenport Rd., Suite 225, Dallas, TX 75252 • (972) 735-0101 • Fax: (972) 735-0443  
 5439 N. 22nd St., Arlington, VA 22205 • (703) 237-0016 • (703) 237-0655  
 Web: www.aosusa.com • E-mail: info@aosusa.com