

## Key Features

- AES or Triple-DES encryption algorithms
- Fully automatic Diffie-Hellman public key management
- Supports operation from 2.4 Kbps to 52 Mbps
- Standard interfaces - V.35, RS-449, X.21, EIA-530, RS-232, T1, E1, T3, HSSI
- Compliant with FIPS 140-2 (Level 3 physical, Level 2 overall)
- Front-panel touch pad and LCD display for easy set up and status/alarm monitoring
- SafeEnterprise Security Management Center for secure remote configuration management and status/alarm monitoring
- Embedded secure SNMP support

# SafeEnterprise Link Encryptor

*High-Speed Protocol-Transparent Security  
For Global Networks*



The SafeNet SafeEnterprise™ Link Encryptor secures sensitive data transmitted over high-speed, point-to-point or dial-up communication links at speeds up to 52 Mbps. Commercial organizations and government entities rely heavily on close looped secure networks for the transport of highly sensitive data. The SafeEnterprise Link Encryptor family of products meets these needs by providing the widest range of link encryption solutions available in the market today.

SafeEnterprise Link Encryptors support a full range of network equipment including routers, front-end processors, PBX trunks, codecs, bridges and multiplexers. As standalone hardware encryption devices they offer the strongest level of security as well as ease of management, configuration, and upgradeability. Diffie-Hellman key management provides a fully automated system, eliminating the operational and maintenance costs of managing an encrypted network with manual key distribution.

SafeEnterprise Link Encryptors provide complete plug and play operation as well as a front panel touch pad and LCD display for easy configuration. In addition, SafeEnterprise Link Encryptors can be securely managed and configured with SafeEnterprise™ Security Management Center, a robust secure SNMP-based management platform providing full remote control of all SafeEnterprise Link Encryptor devices on a single network.

The SafeEnterprise Link Encryptor meets FIPS 140-2 (Level 3 physical, Level 2 overall) and has a Medeco pick-resistant lock. It's construction is tamper-resistant cold-rolled steel construction and has an active zeroization of cryptographic data upon tamper detection. The SafeEnterprise Link Encryptor features secure management and configuration over IP network and an ethernet port (IEEE 802.3) for management and configuration.

## General

- Meets FIPS 140-2 (Level 3 physical, Level 2 overall)
- Medeco pick-resistant lock
- Tamper-resistant cold-rolled steel construction
- Active zeroization of cryptographic data upon tamper detection
- Secure management and configuration over IP network
- Ethernet port (IEEE 802.3) for management and configuration

## Interface Options

- Link Encryptor NRZ-L and NRZ-H
  - V.35
  - X.21 (V.11)
  - X.21 bis
  - RS-449
  - EIA-530
- Link Encryptor RS-232
- Link Encryptor T1
- Link Encryptor E1
- Link Encryptor T3
- Link Encryptor HSSI

## Cryptographic/Authentication

- AES (192-bit keys)
- Triple-DES (168-bit keys)
- Digital Signature Standard (DSS)
- X.509 Digital Certificates (For T3 and HSSI Only)

## Key Management

- Diffie-Hellman (fully automatic)
- Key size 1024 (For T3 and HSSI Only)

## Environmental

- 32° to 104° F (0° to 40°C) operating temperature
- Up to 90% operating humidity (non-condensing)
- - 200 ft. to + 6,500 ft. AMSL

**Corporate:** 4690 Millennium Drive, Belcamp, Maryland 21017 USA  
Tel: **+1 410.931.7500** or 800.533.3958 email: [info@safenet-inc.com](mailto:info@safenet-inc.com)

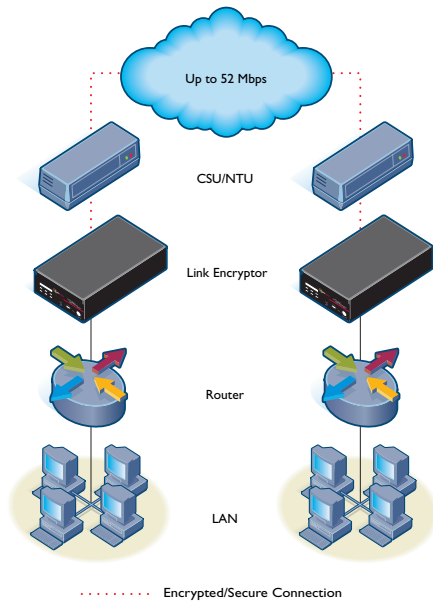
[www.safenet-inc.com](http://www.safenet-inc.com)

Australia +61 3 9882 8322  
Brazil +55 11 3392 4600  
Canada +1 613.723.5077  
China +86 10 8266 3936  
Finland +358 20 500 7800  
France +33 1 41 43 29 00  
Germany +49 18 03 72 46 26 9  
Hong Kong +852.3157.7111  
India +91 11 26917538

Japan(Tokyo) +81 3 5719 2731  
Korea +82 31 705 8212  
Mexico +52 55 5575 1441  
Netherlands +31 73 658 1900  
Singapore +65 6297 6196  
Taiwan +886 2 27353736  
UK +44 1276 608 000  
U.S. (Massachusetts)  
+1 978.539.4800

U.S. (New Jersey)  
+1 201.333.3400  
U.S. (Virginia) +1 703.279.4500  
U.S. (Irvine, California)  
+1 949.450.7300  
U.S. (Santa Clara, California)  
+1 408.855.6000  
U.S. (Torrance, California)  
+1 310.533.8100

Distributors and resellers  
located worldwide.



## Regulatory

- Meets FCC Part 15 Class A
- CTR1, CTR2
- UL, UL-C
- CE-168X Mark
- Global Homologation
- FIPS 140-2 Certification
- EN55022B
- EN60950.3d

SafeNet offers distinct levels of support based on the type of support you require. The SafeEnterprise Link Encryptor has a one year (12 month) standard, basic warranty. Extended support and maintenance contracts are available. Support is also offered online through our customer support website, express service center, and customer connection center.

## Technical Specifications

### Operational

- Protocol-transparent operation
- Maximum synchronous data rates:
  - 128 Kbps - SafeEnterprise™ Link Encryptor RS-232
  - 512 Kbps - SafeEnterprise™ Link Encryptor NRZ-L
  - 2 Mbps - SafeEnterprise™ Link Encryptor NRZ-H
  - 1.544 Mbps - SafeEnterprise Link Encryptor T1
  - 2.048 Mbps - SafeEnterprise Link Encryptor E1
  - 45 Mbps - SafeEnterprise™ Link Encryptor T3
  - 52 Mbps - SafeEnterprise™ Link Encryptor HSSI
- Front-panel LCD display
- Front-panel touch pad
- Remote monitoring and management via SafeEnterprise™ Security Management Center

### Latency (Secure Mode)

- NRZ/T1/E1: 8 bit times
- T3: 4764 bit times
- HSSI: 168 bit times

### Dimensions

- SafeEnterprise™ Link Encryptor RS-232, NRZ-L, NRZ-H, T1, E1:
- 3.0 H x 8.5 W x 16.0 L inches
  - (7.6 H x 21.6 W x 40.6 L cm) 7.21 lbs (3.28 Kg)
- SafeEnterprise™ Link Encryptor HSSI, T3:
- 2.15 H x 17 W x 10.5 L inches
  - (5.46 H x 43.2 W x 26.6 L cm) 6.35 lbs (2.8 Kg)

### Power Supply

- 90-110 VAC ±10%, 210-240 VAC ±10% @ 60/50 Hz (switch selectable) or 90-260 VAC auto-sensing models
- SafeEnterprise™ Link Encryptor RS-232, NRZ-L, NRZ-H, T1, E1:
- 8.75 Watts dissipation (typical)
- SafeEnterprise™ Link Encryptor HSSI:
- 17 Watts dissipation (typical)
- SafeEnterprise™ Link Encryptor T3:
- 11.6 watts (typical)