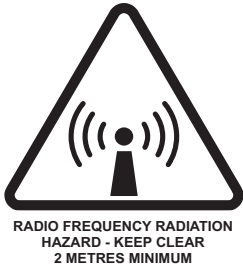




Nera WorldCommunicator User Guide





RADIATION WARNING

High levels of radio frequency radiation are considered health hazardous. Although no single value of “safe radiation level” has been agreed upon by all countries, the American National Standards Institute (ANSI/IEEE C95.1-1992) recommends that people should not be exposed to radiation stronger than 1 milliwatt per square centimetre at the frequencies used in the WORLDCOMMUNICATOR terminal. Accordingly, the operator of the terminal should ensure that the area extending 2 metres from the front of the antenna be kept clear of personnel when the terminal is transmitting.

OBTAINING LICENSING FOR INMARSAT TERMINALS

Under rights given under ITU Radio Regulations, local telecommunications administrations establish and enforce national rules and regulations governing types of emissions, power levels, and other parameters that effect the purity of signal, which may be radiated in the various frequency bands of the radio spectrum.

To legally operate an Inmarsat terminal, it is necessary to obtain permission from the local telecommunications regulatory authorities of the country you are operating within. Using your terminal in any country without permission causes you to run the risk of confiscation of the terminal or legal action from local authorities. Normal practice for taking telecommunications into another country is to apply for a license before travel. If a license has not been obtained before travel, the equipment may be put into storage by local authorities until such time as a license is obtained.

All specifications are subject to change without notice.

© Nera Satcom AS, 2002



STARTING UP	5	ADVANCED FUNCTIONS :	25
PHONE BOOK	7	Overview	25
<i>Memory capacity</i>	7	Access control	26
<i>Abbreviated dialing (prefix 23)</i>	7	<i>Restricted dialing</i>	26
<i>Editing or adding entries</i>	7	<i>Checking the dialing setup</i>	26
<i>Saving entries to/from PC</i>	8	<i>Restricted dialing setup</i>	27
TRAFFIC LOG :	9	<i>Restricted SIM usage</i>	28
<i>General</i>	9	<i>Setting SIM restrictions</i>	28
<i>Traffic log readout</i>	9	Satellite setup	29
<i>Traffic log settings</i>	11	Configuration	30
<i>Printout viewer - normal calls (Cct)</i>	13	<i>ISDN configuration</i>	30
<i>Printout viewer -</i>		<i>Net service providers</i>	30
<i>Mobile Packet Data Service calls (MPDS)</i>	14	<i>Set diagnostics</i>	31
FUNCTIONS	15	<i>Power conservation</i>	31
<i>Overview</i>	15	Information available	32
<i>Function reference list</i>	16	<i>Miscellaneous version Id information</i>	32
ACCESS LEVEL	17	<i>Network status information</i>	32
<i>General</i>	17	Installation	33
<i>Changing phone PIN</i>	17	<i>Phone name setup</i>	33
<i>Functions requiring owner level</i>	18	MSN CONFIGURATION	34
<i>Shifting to owner level</i>	18	<i>Services</i>	34
<i>Changing owner level password</i>	18	<i>Routing of incoming calls</i>	35
SELECTING DEFAULT NET PROVIDER	19	<i>Routing of incoming calls (examples)</i>	36
<i>General</i>	19	<i>Device manager</i>	37
<i>Default Net service provider</i>	19	<i>ISDN MSN configuration</i>	38
PHONE SETUP :	20	<i>DECT MSN configuration</i>	39
<i>Backlight control</i>	20	<i>Grouping ISDN and DECT</i>	40
<i>Setting call duration limit</i>	21	<i>Collective call to all DECT handsets</i>	41
<i>Setting date and time</i>	21	STORING CONFIGURATION SETTINGS	42
<i>Setting key unlock code</i>	22	PRINT HANDLING	43
PRECHARGE :	23	<i>Setup</i>	43
<i>General</i>	23		
<i>Owner loads Precharge time</i>	23		
<i>Comments</i>	24		
<i>Precharge on SIM card</i>	24		



4 When receiving a satellite signal, a signal strength bar will appear in the search window.

The longer the signal bar or higher the signal strength indicator value, the better the signal quality. The maximum marker indicates the highest signal strength achieved during the current search.

Note! It is recommended that the signal strength reading (S/N=Signal/Noise ratio) should be at least 535. However, 4.8 kbps speech also works at 420.

Clicking **Seek** starts the search again.

If required, select a specific satellite by clicking **New**, or point the antenna directly in the direction of the alternative satellite.

See also "[Selecting default Net provider](#)" later in this guide.

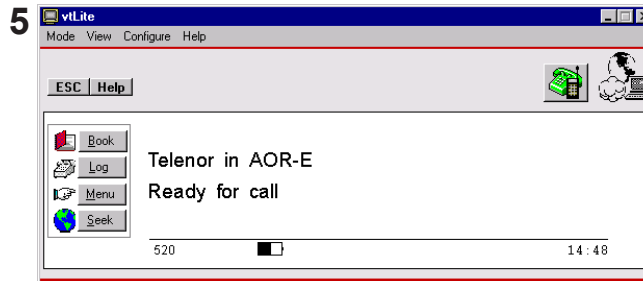
5 The equipment is ready for use when the **Main window** appears.

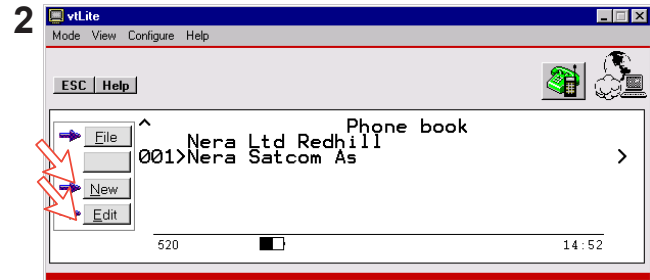
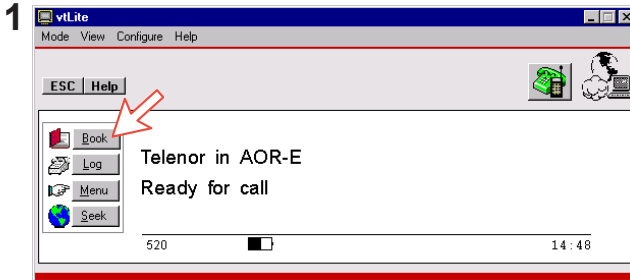
To make a connection, see "[Getting Started](#)"



Signal strength indication

Maximum marker





Memory capacity

	Modem Unit	SIM card (Data vary with card type)
Phone numbers:	100 entries	100 entries
Number length:	22 digits	22 digits
Name length:	29 characters	Minimum 12 characters
Entry numbers:	0 - 99	100 and up

The SIM card entries and "Modem Unit" entries merge when the card is inserted. The list is sorted by name.

Abbreviated dialing (prefix 23)

1 Clicking **Book** opens the **Phone book**.

2 Scroll through list to wanted entry.

Example: dialing **2310#** on the DECT handset or ISDN keypad fetches and sends the telephone number stored under short number entry 010.

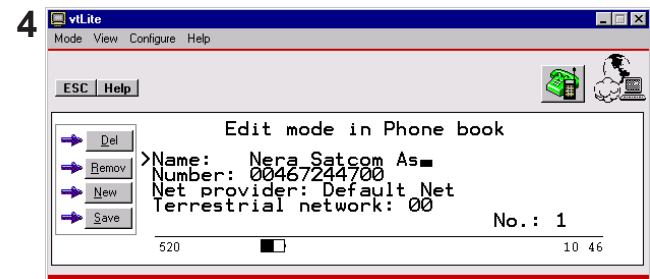
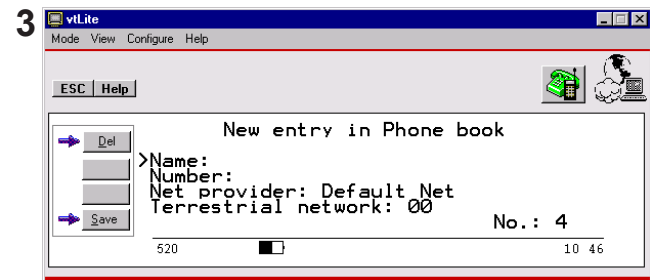
Editing or adding entries

3 Click **New** to add an entry to the book.

Use **Del** to modify. **Save** stores the new entry.

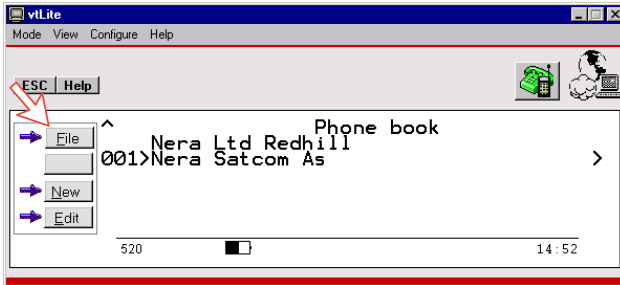
4 Click **Edit** to make changes to an entry.

Use **Del** to modify and **Remov** to erase the entry.



Note! The book is also used with the restriction "Dial from book only", see "[Restricted dialing setup](#)".

Saving entries to/from PC



Clicking **File** in the **Phone book** window opens the **Book File Manager**:

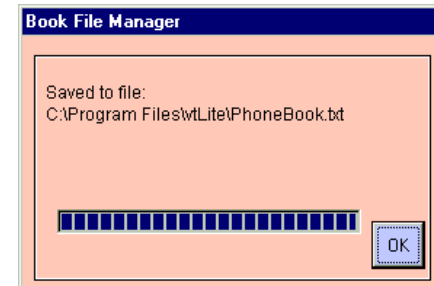
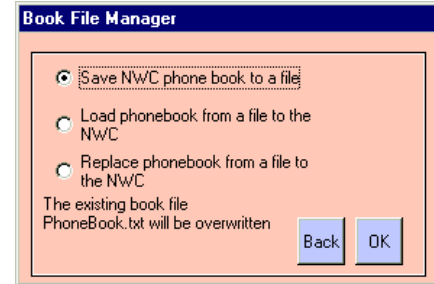
Clicking **OK** executes the required filing:

- Saving the WorldCommunicator phone book on the PC. The book is automatically stored in the file location:

"C:\Program files\vtLite\Phonebook.txt".

Be aware that saving the next phone book overwrites the existing file.

- Loading a phone book from a file to the WorldCommunicator.
- Replacing the existing phone book in the WorldCommunicator with a phone book file from the PC.



General

This function logs all outgoing and incoming calls both with and without SIM card inserted. Incoming calls may be logged as well.

Up to 100 calls can be logged:

Circuit switched calls (Cct) including:

- Voice calls
- Mobile Data Service calls

Packet switched data calls (Mpd) including:

- Mobile Packet Data Service calls

The WorldCommunicator owner may set the log output mode as follows, (see "Traffic log settings"):

- paused
- cleared (stops logging and clears the log)
- enabled

Traffic log readout

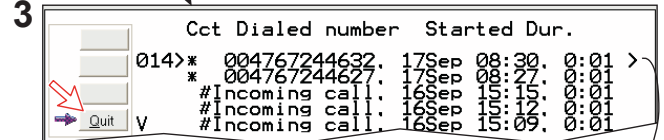
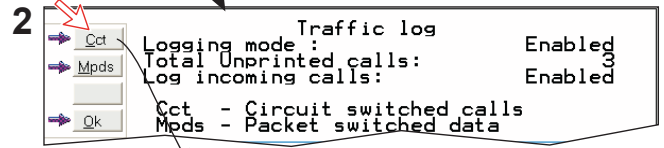
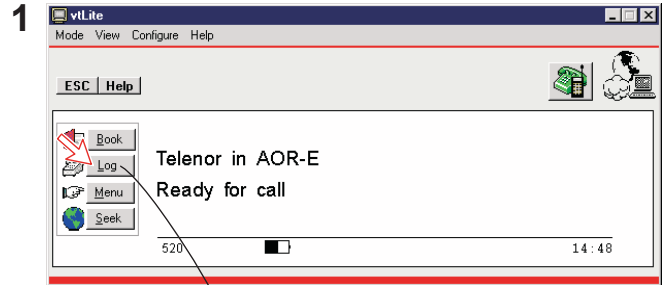
1 Clicking **Log** opens the Traffic log window.

2 The Traffic log window shows whether the logging is enabled, whether incoming calls are logged, and the total number of *unprinted* calls (MPDS and Cct calls).

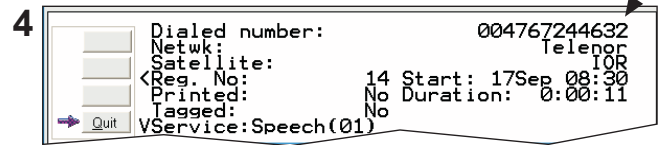
Circuit switched calls:

Clicking **Cct** displays the list of calls.

3 Scroll **↑/↓** to wanted call record and press **→** to display details of the selected call.



* Calls not yet printed # Tagged for printout, see Traffic Log Settings






4 The call details include data such as dialed number, start of the call, duration, service and terminal Id.

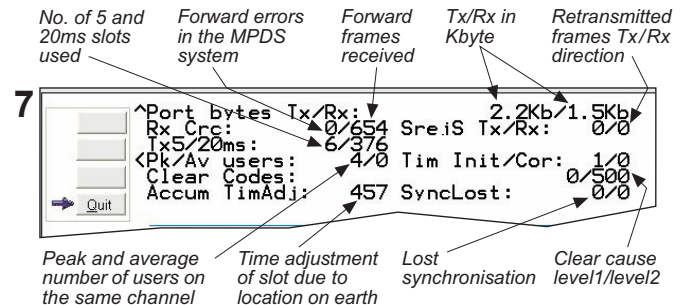
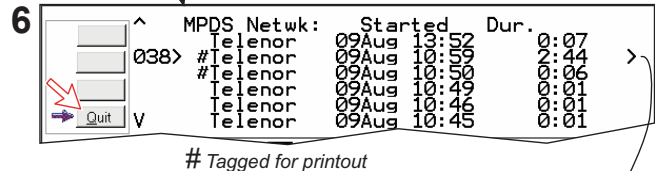
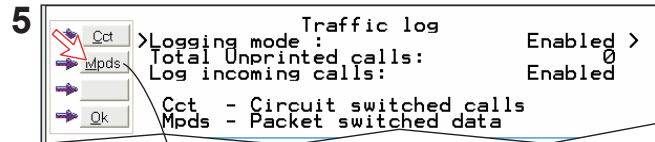
Quit reverts to main window.

Packet switched data calls:

5 Clicking **Mpds** displays the list of *Mobile Packet Data Service* calls.

6 The call list include data such as Net provider, start of the call and duration. Scroll / to wanted call record and press  to display details of the selected call.

7 The call details include data such as forward errors in the MPDS system, forward frames received, etc. **Quit** reverts to main window.





Traffic log settings

(owner level only, see "[Shifting to owner level](#)")

1 In the Main window, clicking **Log** opens the Traffic log window, which displays the current log mode, number of unprinted calls, and whether logging of incoming calls is enabled/disabled.

- Point to **Logging mode**, click **Edit** or to choose mode of operation:

- Paused:** any logging is off.
- Cleared:** all log entries are deleted (incoming and outgoing).
- Enabled:** outgoing logging is on.

Scroll / to wanted mode, and click to select.

- Scroll down to **Log incoming calls** and click **Edit** or to enable or disable logging of incoming calls.

Circuit switched calls:

2 Clicking **Cct** in the Traffic log window (1) opens the list of *all* call records except MPDS calls.

Print outputs all unprinted calls (marked with a star):

- Clicking **Tag*** marks *all* calls with a hash, which adds the records to the printout file.
- Clicking **Tag** marks the *selected* call with a hash, which adds the record to the printout file.
- Clicking **Tag** again untags a selected record.

3 Pressing at a record when in window (2) displays detailed call data.

1

2

3

Hours:minutes:seconds



Mobile Packet Data Service calls:

4 Clicking **Mpds** in the Traffic log window (1) opens the list of *Mobile Packet Data Service* call records.

5 Print outputs all unprinted calls (tagged with a hash):

- Clicking **Tag*** marks all calls with a hash, which adds the records to the printout file.
- Clicking **Tag** marks the *selected* call with a hash, which adds the record to the printout file.
- Clicking **Tag** again untags a selected record.

6 Pressing **Print** at a record when in window (2) displays detailed call data.

4 Traffic log

```

Logging mode : Enabled
Total Unprinted calls: 0
Log incoming calls: Disabled

Cct - Circuit switched calls
Mpds - Packet switched data

0 SIM 11:01
    
```

5 MPDS Netwk: Started Dur.

#	Telenor	09Aug	13:52	0:07
038	#Telenor	09Aug	10:52	2:44
	#Telenor	09Aug	10:50	0:06
	Telenor	09Aug	10:49	0:01
	Telenor	09Aug	10:46	0:01
	Telenor	09Aug	10:45	0:01

#Tagged for printout

6 Port bytes Ix/Rx: 3.7Kb/68.0Kb
 Rx_Crc: 0/1735 Srej: Ix/Rx: 0/0
 Ix5/20ms: 25/631 Connects: 1
 <Pk/Av users: 2/0 Tim Init/Cor: 1/0
 Clear Cause: 301
 Accum TimAdj: 210 SyncLost: 0



Printout viewer - normal calls (Cct)

The viewer lists tagged call records.

Records that have been printed out previously are

marked with a hash.

The record file can be printed out or saved to disk.

For default setup, see **"PRINT HANDLING"**.

Click to delete record file

Click to save record file

Click for printout

Subscriber number

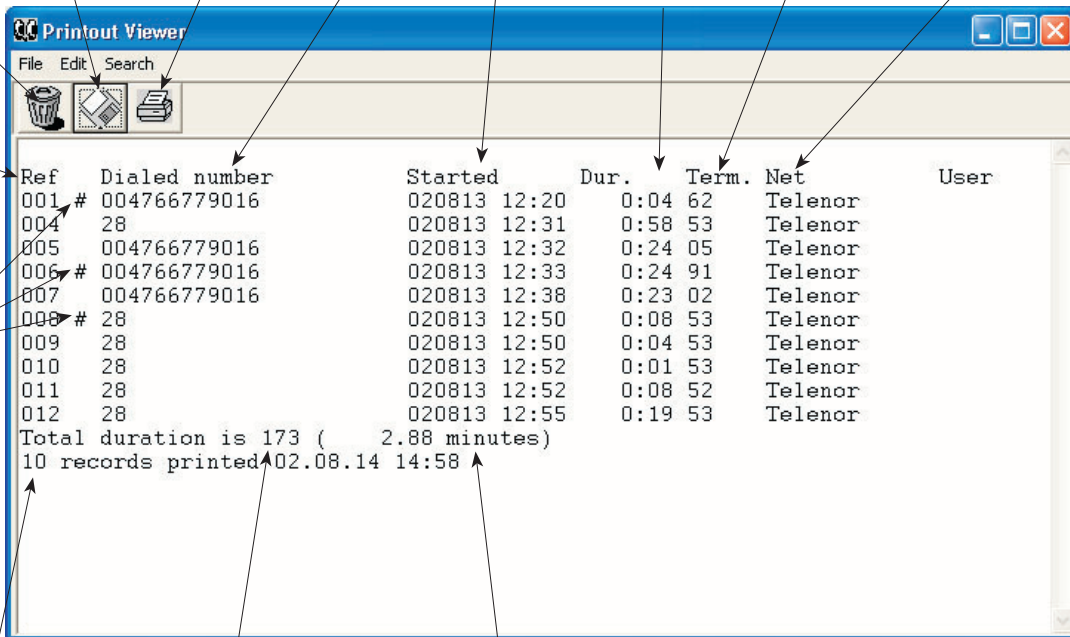
Start date and time

Call duration in minutes and seconds

Terminal Id

Net service provider

Ref. no.



#: record printed previously. "No hash" when printed first time.

Number of records

Duration in seconds

Accumulated time in minutes and 1/100 of a minute



Printout viewer - Mobile Packet Data Service calls (MPDS)

The viewer lists tagged call records.

Records that have been printed out previously are

marked with a hash.

The record file can be printed out or saved to disk.

For default setup, see "**PRINT HANDLING**".

Click to delete record file

Click to save record file

Click for printout

Start date and time

Call duration in minutes and seconds

Net service provider

Transmitted data

Received data

Ref. no.

#: record printed previously.
"No hash" when printed first time.

Ref	Started	Dur.	Net	Tx	Rx	RxSreg	TxSreg	CRC	Clr
002 #	020813 12:26	0:44	Telenor	2.2Kb	1.5Kb	0	0	0	000
003	020813 12:27	3:05	Telenor	4.8Kb	107.9Kb	0	0	0	000
013 #	020813 13:02	0:16	Telenor	115	36	0	0	0	000
014	020813 14:25	0:23	Telenor	385	166	0	0	0	000
Total duration is 268 (4.47 minutes)									
4 records printed									

Number of records

Duration in seconds

Accumulated time in minutes and 1/100 of a minute

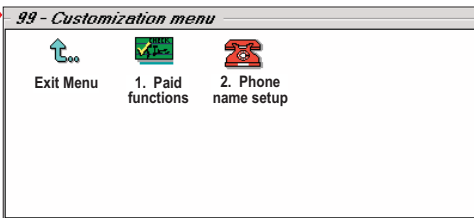
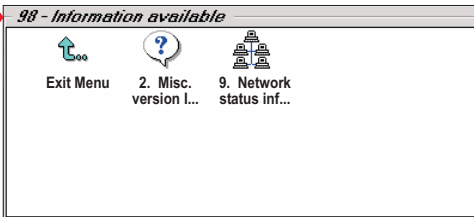
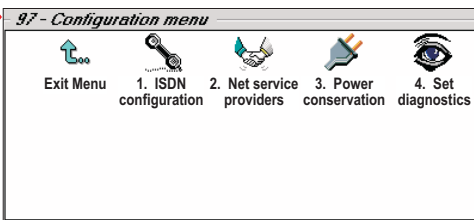
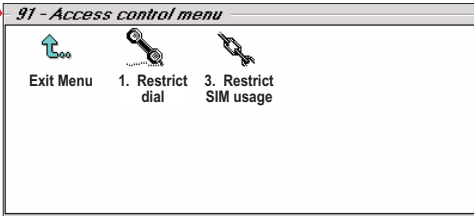
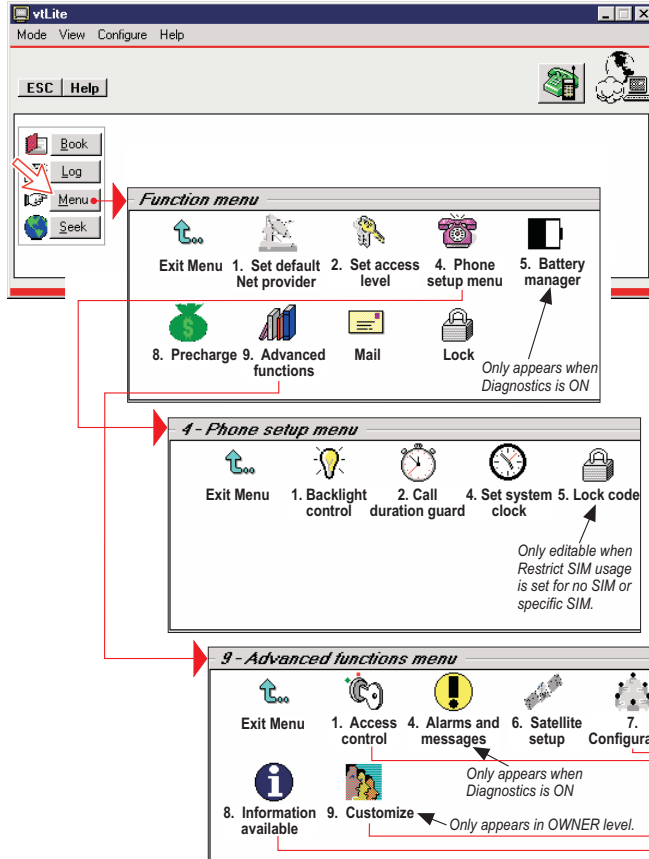
Retransmitted frames

Forward errors in the MPDS system

Clear cause codes



The diagram provides an overview of the functions. Point at icons and double-click the mouse to open menus and functions.



**Function reference list**

 Reference number for direct selection. Click menu in main window and then key in the number.

Ref.	Function	Features
1	Set default Net provider	Allows changing Net service provider (and terrestrial network). See " Selecting default Net service provider ".
2	Set access level	Allows shifting between user level and owner level, changing phone/SIM PIN code and owner password. See " Access level ".
4	Phone setup menu	See " Phone setup ".
41	Backlight control	Sets display backlight on/off time.
42	Call duration guard	Sets maximum call duration.
44	Set system clock	Sets Modem time and date.
45	Lock code	Sets function lock.
8	Precharge	Allows preprogramming of total call duration. See " Precharge ".
9	Advanced functions	See " Advanced functions ".
91	Access control menu	See " Advanced functions>Access control ".
911	Restrict dial	Only allows calls from Phone Book. List of barred numbers may be established.
913	Restrict SIM usage	Only allows calls with specific card, no card or any card.
97	Configuration menu	See also " Advanced functions>Configuration ".
971	ISDN configuration	Chooses between ISDN protocols.
972	Net service providers	Changing Net service provider data.
973	Power conservation	Enables conservation of battery power during communication.
974	Set diagnostics	Allows additional system information to be displayed
98	Information available	See " Advanced functions>Information available ".
982	Misc. version Id information	Displays a series of version information windows.
983	Network status information	Displays various network status information.
99	Customization menu	See " Advanced functions>Installation ".
991	Paid functions	Installs additional functions, if any.
992	Phone name setup	Allows altering the factory and phone name.

General

The WorldCommunicator user program (vtLite) is accessible from two levels:

- **USER LEVEL** – accessed by Phone PIN or SIM PIN.

*Note! If the **Phone PIN** is accidentally lost, it is possible to reset the user's password to default (1234) by logging in as owner:*

"Phone PIN: + owner's password"
(Resetting is not possible on SIM card.)

- **OWNER LEVEL** – accessed by owner level password.

Warning! To prevent misuse, passwords other than default must be entered before putting the WorldCommunicator in operation.

Changing phone PIN

1 Double-click the **Set access level** icon on the **Function menu**.

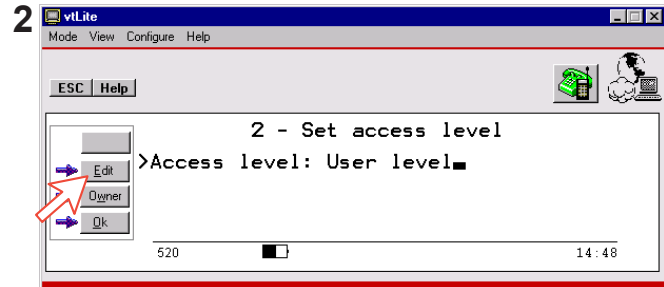
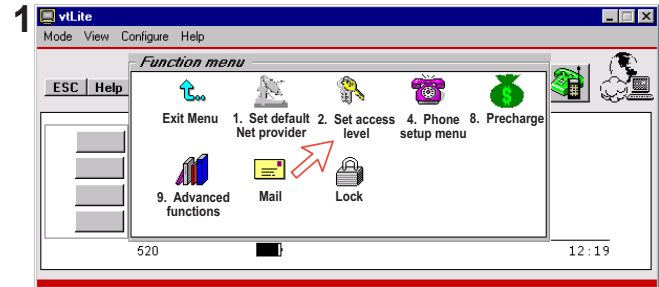
2 Click **Edit** to modify the Phone PIN code.

3 Key in:

- Current PIN code
- New PIN code
- Retype to confirm

Click **Ok** following each entry and to store new code.

*Note! Clicking **Ok** without entering any numbers for **New PIN** and **Retype new PIN** disables the SIM PIN/Phone PIN. NB! The **Old PIN** code must be entered to reactivate the SIM PIN/Phone PIN.*





Functions requiring owner level

Programming of the functions below requires that the user access is set to **OWNER LEVEL**:

- Traffic log
- Set default Net provider
- Precharge
- Restricted dial
- Restricted SIM usage
- ISDN configuration
- Paid functions
- Phone name setup

Shifting to owner level

1 Click **Owner** in **Set access level** window.

2 Key in the password.

Note! The default password is: 1 2 3 4 5 6 7 8 9 0

Clicking **Ok** activates the **Owner level**.

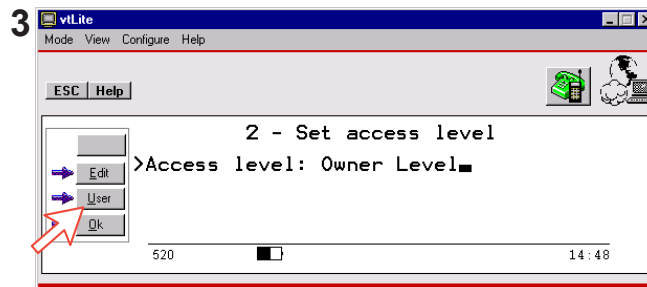
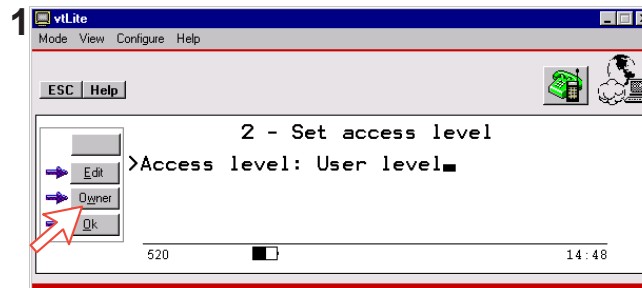
Changing owner level password

3 Open the **Set access level** window again, and click **Edit** to modify the owner password. Key in:

- Current password
- New password (*10 – 12 digits*)
- Retype to confirm

Click **Ok** following each entry and to store new password.

To revert to **User level**, open the "Set access level" window and click **User**.



General

The default Inmarsat Net service provider (NSP) for a satellite (Ocean Region) is automatically used if the user does not select another one when making a call.


Make sure that you choose the Net service provider who commissioned the equipment. You will otherwise be barred or charged additional rate.




Default Net service providers can be preprogrammed from the PC for the current Ocean Region.

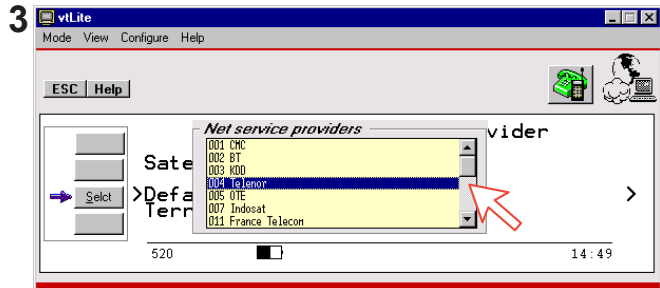
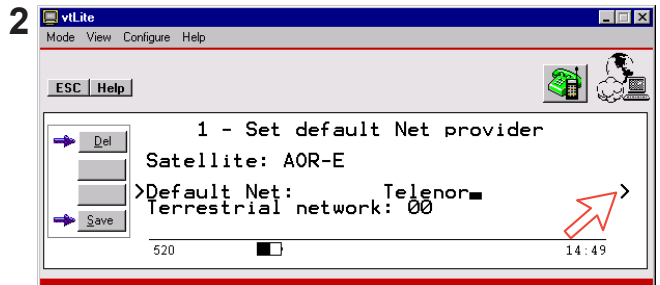
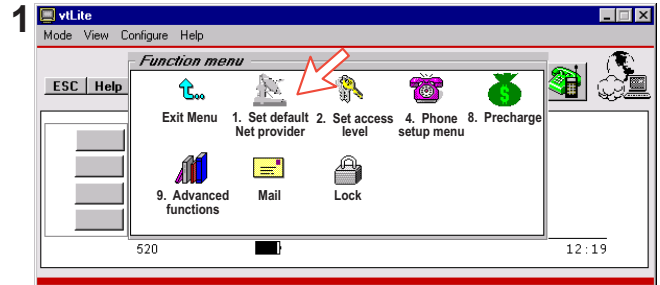
When using SIM card, selection is automatically restricted to one of the allowed Net service providers and does not need to be programmed!

Default Net service provider

1 On the **Function menu**, double-click the **Set default Net provider** icon to display the current selections.

2 Pressing  displays the list of available Net service providers.

3 Scroll to required Net provider: /, and press  to enter chosen Net as default. **Save** stores the selected Net provider for this satellite (Ocean Region).





General

This function allows as follows:

- Conserving battery power by setting the ON-time of the Modem Unit display backlight to “60 secs” or “Always off”, (see below).
- Limitation of call duration (see next page).
- Setting date and time (see next page).
- Activating the Key lock which prevents unauthorized use, (see following pages).

Double-click the **Phone setup menu** icon in the **Function menu** to access the functions:

Backlight control

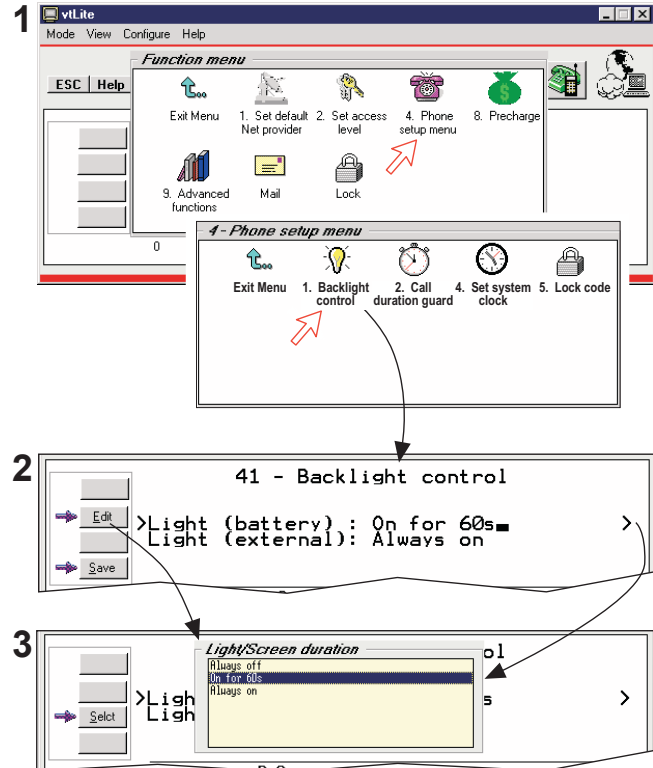
1 Double-clicking the **Backlight control** icon allows setting of the display light mode.

2 The display light can be set individually for battery operation, or external power. Use / to select and click **Edit** to modify.

3 Use / to scroll through choices:

- Display light always OFF.
- Display light ON for 60 seconds. Turns ON again when operating Modem buttons.
- Display light always ON.

Clicking **Select** and **Save** stores the selected light mode.





Setting call duration limit

The call duration guard prevents accidental transmission of prolonged 64 kbps calls (64 kbps data, 64 kbps speech, 3.1 kHz/64 kbps audio, 56 kbps data).

The timer sets the point at which the call is automatically cleared:

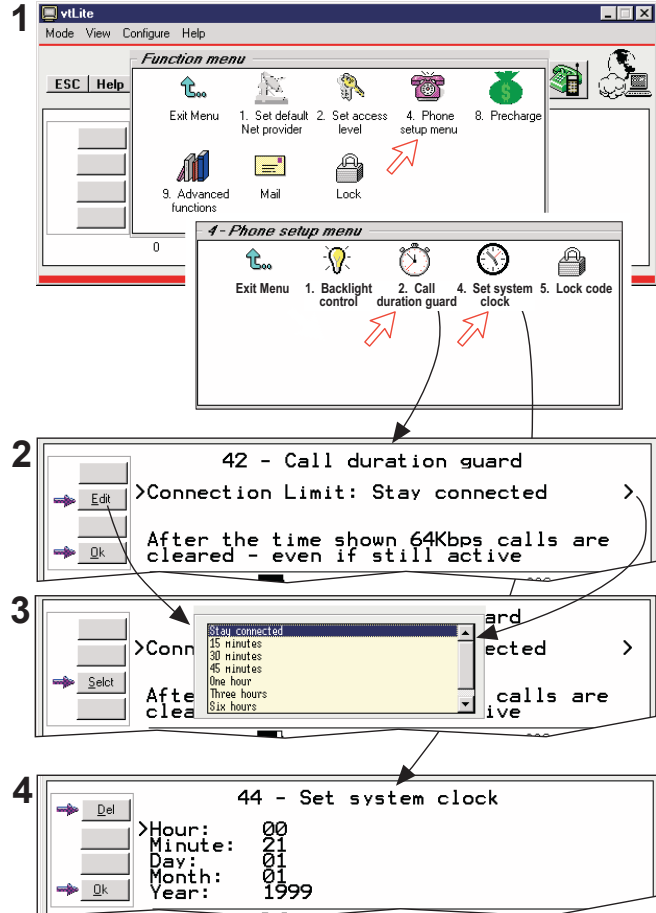
- 1 Double-click the **Call duration guard** icon
- 2 Click **Edit** to set the timer.
- 3 Scroll / to select the required limit (either "Stay connected" or in steps between 15 minutes and 12 hours), and click **Select** to store the setting.

Setting date and time

The function sets the time displayed in the window:

- 1 Double-click the **Set system clock** icon.
- 4 Scroll down through entries and key in new data. Use **Del** to modify. Clicking **Ok** stores the selected settings.

Note! The WorldCommunicator is now restarted.





Setting key unlock code

The terminal lock function prevents unauthorized use when the WorldCommunicator is ON, but still allows reception of incoming calls.

Entering the **Unlock code** unlocks the phone.

Entering a login password (Phone PIN / SIM PIN) will also unlock the phone.

The terminal lock function is only accessible when the WorldCommunicator is restricted for use with a **specific SIM card**, or with **no SIM**. See "[Advanced functions: Restricted SIM usage](#)".

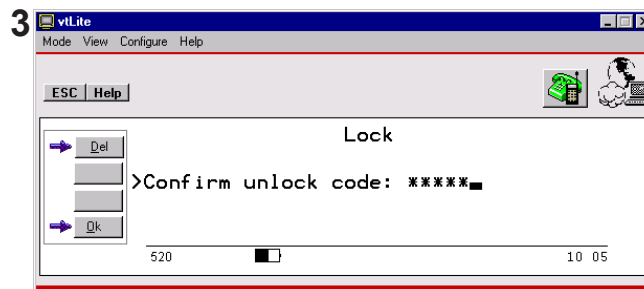
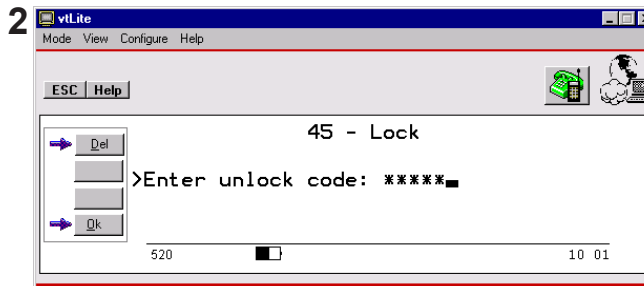
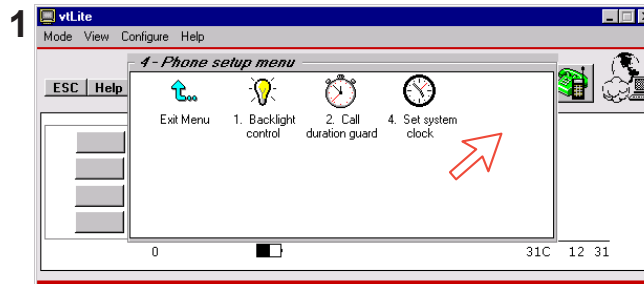
Entering code:

1 Double-click the **Key lock code** icon in the **Phone setup menu**.

2 Enter the **Unlock code** (1 - 6 digits).

3 Repeat code to confirm.

*When the code is set, the **Lock** icon on the function menu must be clicked to **activate** the terminal lock function.*





General

For use with SIM, see "[Precharge on SIM card](#)".

The Nera WorldCommunicator can be preprogrammed with a total call duration limit of up to **44640 minutes** (744 hours).

The function is intended to be used for rental services. The precharge period may be set to e.g. 1 hour, which limits the on air time accordingly, regardless of service used.

Be aware that mobile-to-mobile calls consume twice as much precharge time as mobile-to-fixed calls.

For installation of the software, see on CD:

[Software Installation > Precharge Administrator](#)

For manual, see on CD:

[Additional Manuals > Precharge Administrator](#)

Owner loads Precharge time

Set the WorldCommunicator in **owner level**.

1 Double-click the **Precharge** icon on the **Function menu**.

2 Click **Buy** to key in a new time limit.

Enter the required number of minutes and click **Ok**.

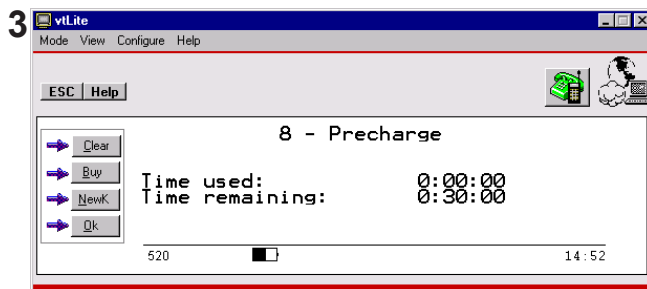
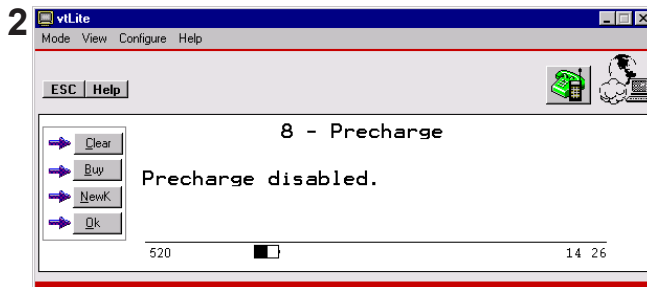
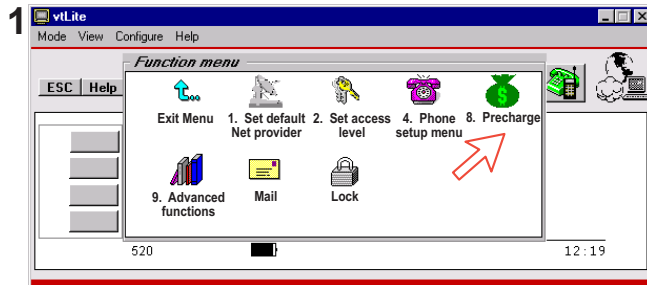
Clicking **Clear** disables the Precharge function: *the Precharge menu entry is now invisible from user level*.

Precharge is *enabled* when buying minutes.

3 The Precharge window now displays the time used and the call time available after entering a new limit.

*NB! Remember to revert to **user level**.*

Nera WorldCommunicator



Comments

Using Precharge function as described on the previous page works well for rental services.


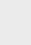


However, the **Precharge Administrator** software available on the Nera WorldCommunicator CD allows the owner to program call time into the Modem Unit.

The program allows the person renting the Nera WorldCommunicator to contact the owner from a remote location. A key is conveyed to the user that adds the required time into the Modem Unit.

Precharge on SIM card

When using SIM card, any Precharge set on the Nera WorldCommunicator itself is overridden. If no Precharge is set on the SIM card, the WorldCommunicator may be used freely.

Precharge remote code handling:

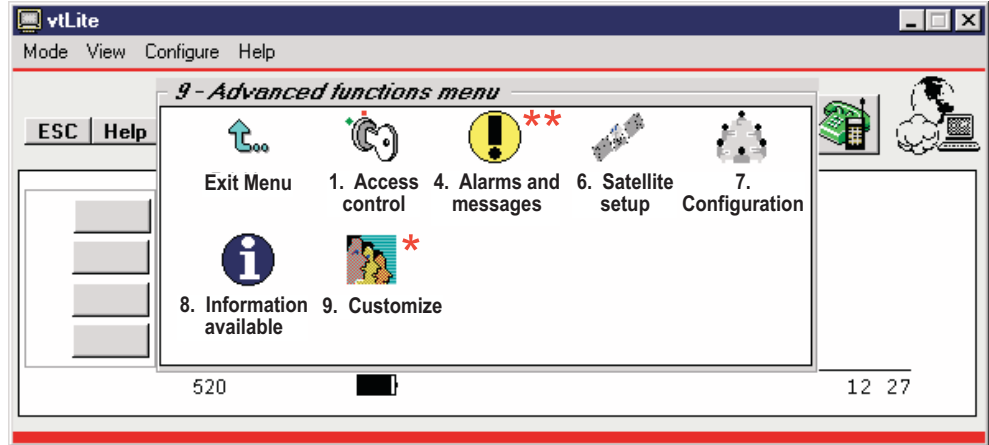
OWNER	USER
<ul style="list-style-type: none"> • Before a Nera WorldCommunicator may be rented, the owner must register the terminal in the data base of the Precharge Administrator program, which is used to generate more precharge minutes for the user.  • The owner uses the Precharge Administrator program to generate the Precharge code for the user to enter into the WorldCommunicator.  • The owner reads or sends the new Precharge code to the user.  	<p><i>More call time is needed:</i></p> <p>When wishing to buy more call time, the user conveys the requested call time to the owner:</p> <ul style="list-style-type: none"> • the user calls the owner via short number 00, <i>The short number 00 is preprogrammed by the owner before rental. This number is the only one the user is allowed to call when out of call time.</i>  • or sends telefax or mail. <p>The user keys in the new Precharge code provided by the owner.</p>



* Some Advanced functions are accessible from **OWNER LEVEL** only.

The OWNER LEVEL is protected by password. For shifting to owner level and assignment of password, see "**Access level**".

** Other Advanced functions are accessible when **Diagnostics** is turned ON.



The Advanced functions include as follows:

- **Access control:** Restrict dial
Restrict SIM usage
- **Satellite setup**
- **Configuration:** Net service providers
Power conservation
Set diagnostics
ISDN configuration
- **Information available:** Misc. version Id information
Network status information
(when diagnostics is ON, see "**Configuration: Set diagnostics**")
- **Customize:** Phone name setup (owner level)
Paid functions



Restricted dialing

The restricted dialing function allows the owner to establish a Barred list of subscriber numbers that cannot be called; or set the WorldCommunicator for dialing from Phone Book only. The restricted dialing modes prevent misuse of the WorldCommunicator:

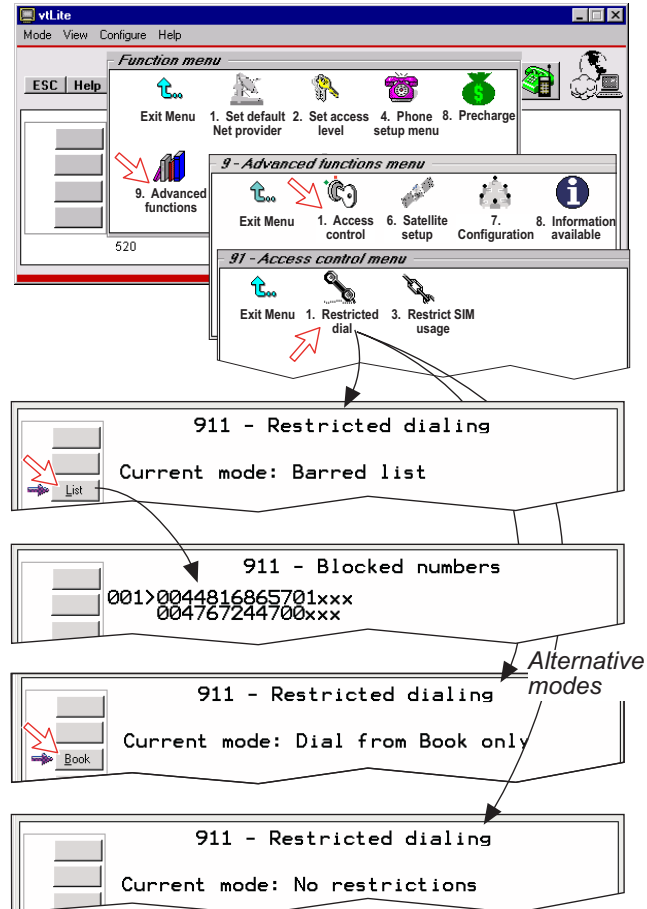
- **Barred list**, which may contain up to 10 phone numbers or part of numbers that **can not** be called. F.ex. the entry "0087" in the barred list prevents all mobile-to-mobile calls.
- **Dial from Book only**, which restricts calls to the numbers in the WorldCommunicator Phone Book. It is still possible to append: an entry with number field "0047" means that it is possible to dial all Norwegian numbers. When a SIM card is inserted, the SIM entries will **not** be merged with the "phone" entries. The function is active for non-SIM operation and for one specific SIM card, see **"Restricted SIM usage"**.
- **No restrictions**.

Only one mode can be active at one time, as selected by the owner, see *next page*.

Checking the dialing setup

Via the **Function menu > Advanced functions menu**, double-clicking the **Restrict dial** icon on the **Access control menu** shows the active mode:

- *Barred list*
- *Dial from Book only*
- *No restrictions*





Restricted dialing setup (owner level only)

"Barred list" and phone book are established as follows:

1 Open the **Restricted dial** window as shown on the previous page.

2 The **Restricted dialing** window shows which list is currently active.

Edit allows selection of restriction mode.

Scroll up/down to select:
(**Selct** enters the chosen mode)

3 Clicking **List** displays the blocked phone numbers. The List key only appears when Current mode is **Barred list**.

4 Clicking **Edit** allows the barred number to be modified:

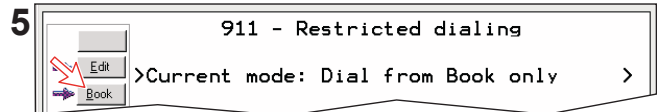
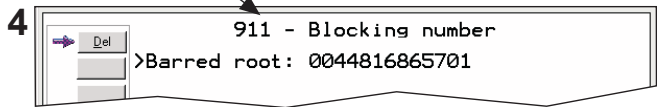
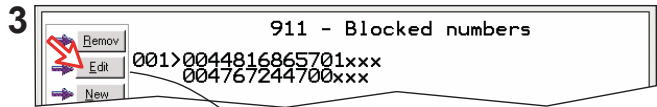
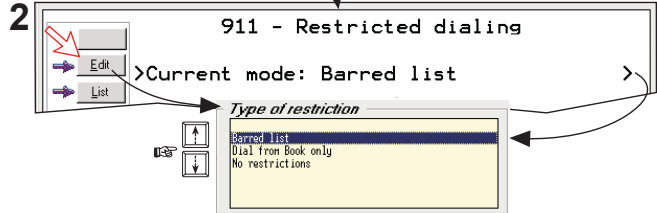
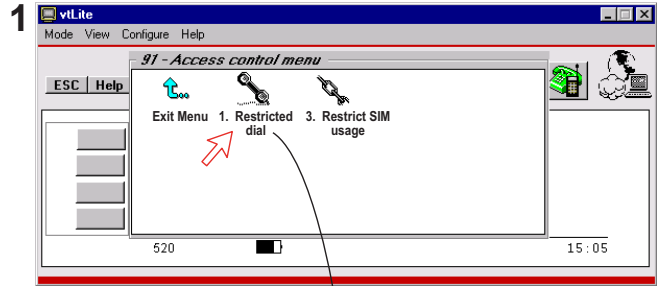
The field is empty when clicking **New** to add a phone number to the list.

Remove deletes number.

Save stores the changes.

5 When the restriction mode "Dial from Book only" is active, clicking **Book** allows data to be entered.

*NB! Remember to revert to **user** level*





Restricted SIM usage

Allowed SIM

The WorldCommunicator can be set to operate from:

- Lock SIM, locked to one specific SIM card. Any other SIM user will be rejected.
- No SIM card. All SIM users will be rejected.
- Any SIM card.

Setting SIM restrictions

(owner level only)

1 Double-click the **Restrict SIM usage** icon.

2 The SIM restrictions window shows an example with the setting **Allowed SIM: No SIM**.

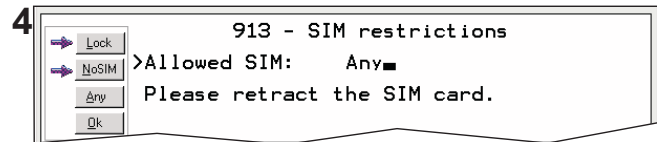
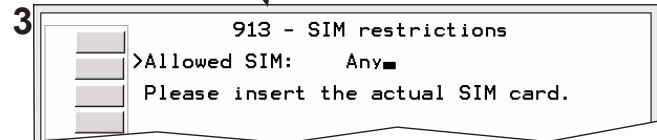
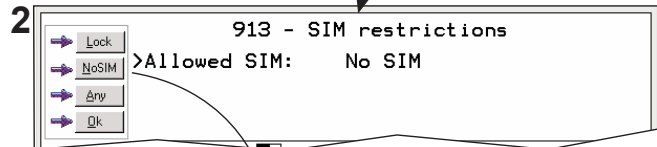
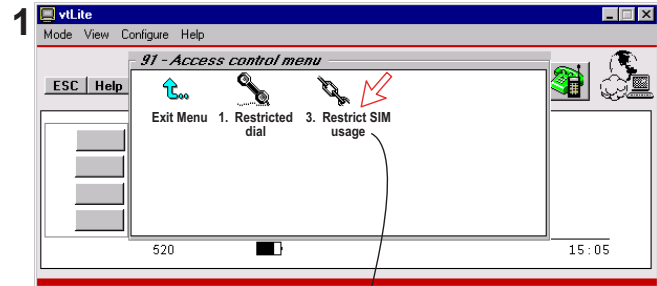
Click **Any** (default) to set the WorldCommunicator for operation from a specific card only.

Lock SIM:

3 Click **Lock** and insert the actual SIM card. The WorldCommunicator can now be operated with that specific card only.

4 When retracting the card, the Id of the SIM provider is displayed.

Ok stores the settings.




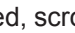



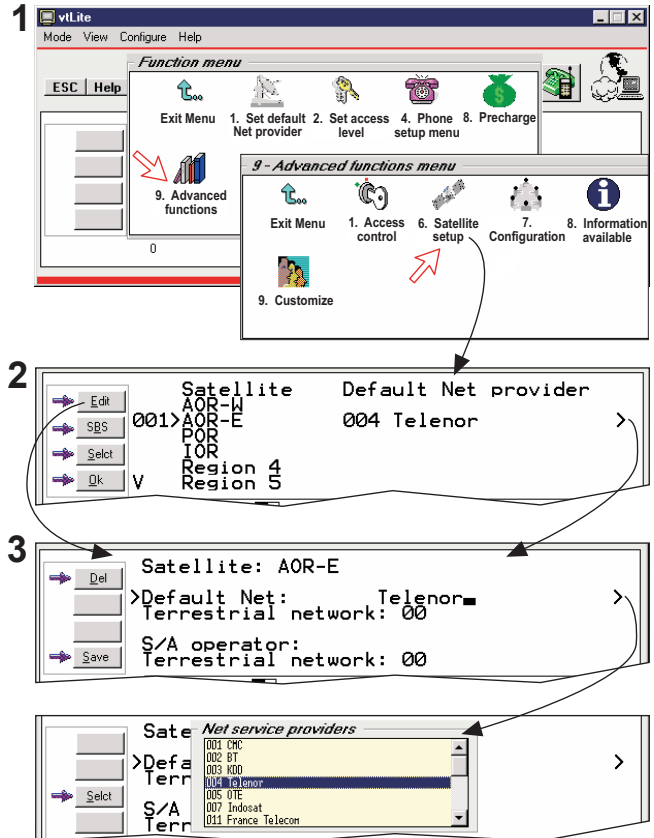
General

The satellite setup function allows preprogramming of **default Net service provider, S/A operator** (Stand Alone operator) and **terrestrial network** for each satellite region (Ocean Region).

When using a SIM card, the above data are already preprogrammed.

Procedure:

- 1** Via the **Function menu**, double-clicking the **Satellite setup** icon in the **Advanced functions menu** opens the list of Satellites and preprogrammed Default Net providers.
 - 2** Scroll  to required region. Clicking **Edit** opens the window for default settings (**3**). The example shows that Telenor has been selected as default provider for the AOR-E region.
 - 3** Press  to change Net provider and networks for the individual satellite. Pressing  displays the list of available providers. Scroll  to the required Net provider and click **Select** to store the chosen network as default.
- If required, scroll down  for entering of Terrestrial network, and S/A operator with corresponding Terrestrial network. *Normally not necessary.*





ISDN configuration

1 Via the **Function menu > Advanced functions menu**, double-clicking the **ISDN configuration** icon in the **Configuration menu** displays the ISDN protocol implemented in the WorldCommunicator.

Switch to **owner level** to choose protocol:

- **Euro ISDN** for connection of equipment conforming to the European ISDN standard.
- **NI-1** protocol for equipment conforming to the NI-1 standard (National ISDN-1).

Net service providers (owner level only)

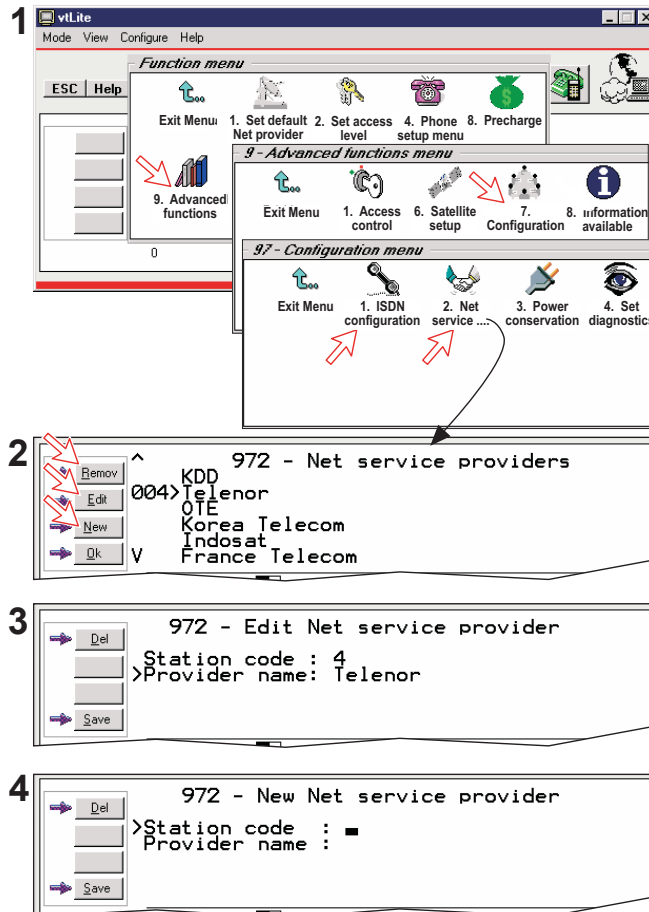
Adding, editing, or removing entries in the list of Net service providers:

1 Via the **Function menu > Advanced functions menu**, double-clicking the **Net service providers** icon in the **Configuration menu** displays the list of Net service providers including their station codes.

2 Scroll to required Net service provider, /. Clicking **Ok** returns you to the Configuration window. **Remov** deletes entry. Clicking **Edit** allows the station code and provider name to be modified (**3**).

4 Click **New** (**2**) to add station code and provider name to the list. Use **Del** to modify. **Save** stores the changes.

*NB! Remember to revert to **user** level.*



Power conservation

Battery power can be conserved during calls. The conservation can be enabled/disabled or set to Auto mode.

When set in Auto mode, the conservation facility is automatically enabled when using the internal battery supply and disabled when connected to an external power supply.

The communication may be slightly impaired with power conservation enabled.

1 Double-click the **Power conservation** icon via the **Function menu > Advanced functions menu**.

2 Enable/Disable power conservation when connected, as required.

Auto reduces drain when using battery.

Save stores new entries or modifications:

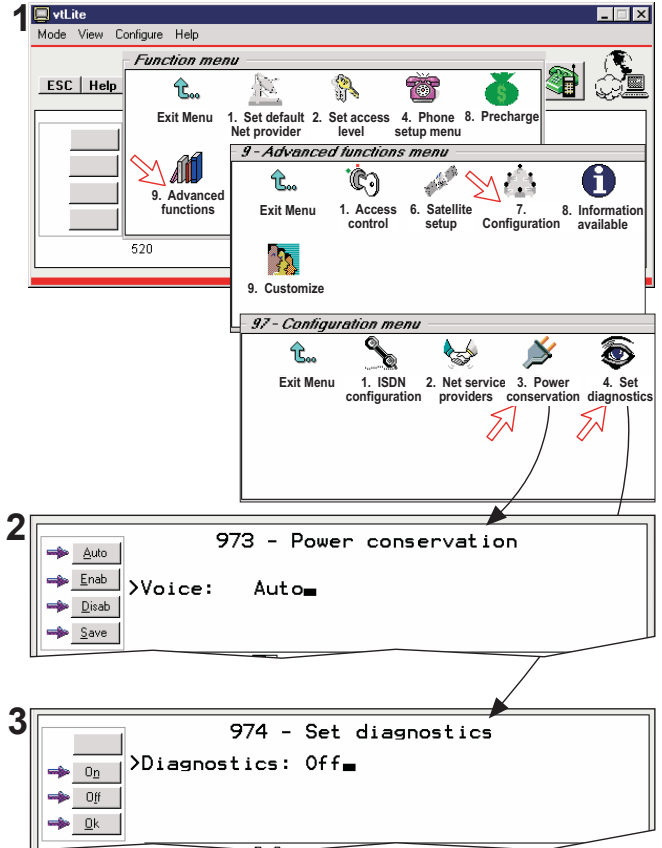
Set diagnostics

Additional system information is displayed when diagnostics is turned **On**.

See also **FUNCTIONS** overview.

1 Double-click the **Set diagnostics** icon via the **Function menu > Advanced functions menu**.

3 Click **On** or **Off** as required.



Miscellaneous version Id information

The **Information available** function displays the terminal forward Id and system versions.

1 Via the **Function menu > Advanced functions menu**, double-clicking the **Miscellaneous version Id information** icon in the **Information available** menu displays the available data (**2**).

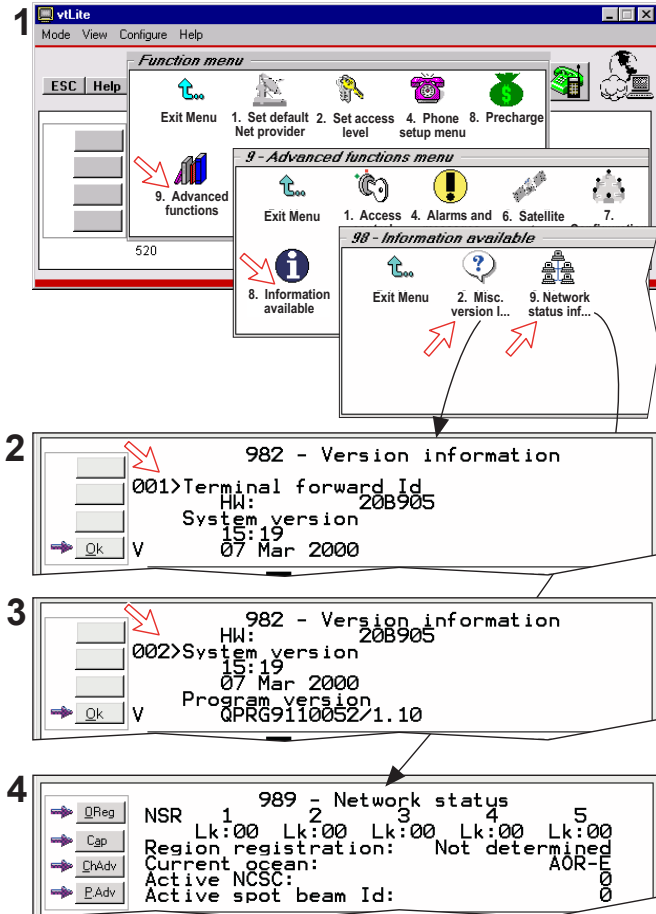
3 With **Diagnostics On**, pressing  opens a series of version information windows.

Network status information (owner level only)

This function displays various network status information.

4 Double-click the **Network status information** icon in the **Information available** menu for readout.

*NB! Remember to revert to **user** level.*





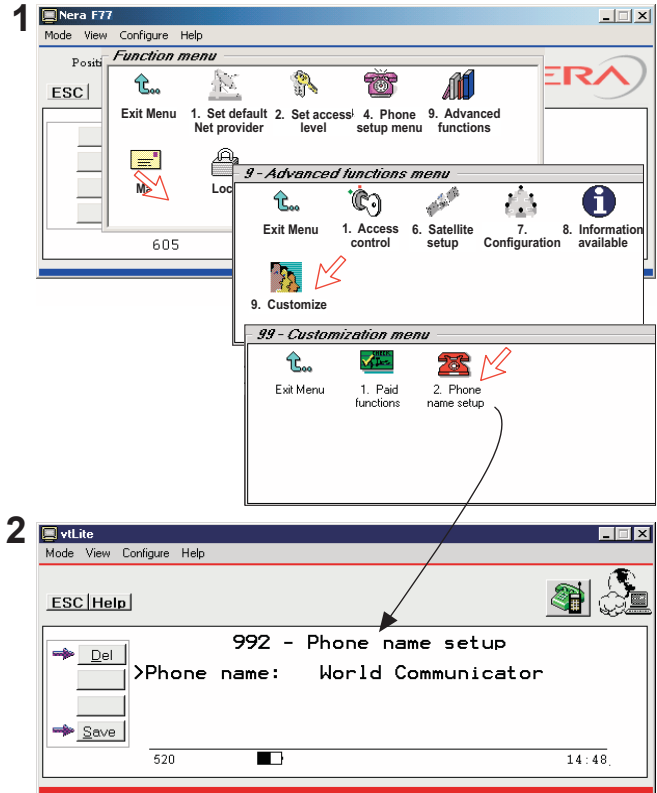
Phone name setup (owner level only)

1 Via the **Function menu > Advanced functions menu**, double-clicking the **Phone name setup** icon in the **Customization menu** displays the Phone name, i.e. WorldCommunicator.

2 Key in uppercase/lowercase letters as required. Use **Del** to modify.

Save stores the changes.

*NB! Remember to revert to **user** level.*





Services

12 DECT handsets can be registered

Valid MSN number: 01 - 12

Max 8 ISDN devices (total 2.5 W drain)

Examples:

ISDN telephone set for 4.8kbps standard speech service.

Valid MSN number: 20-29

When set for 64kbps speech service.

Valid MSN number: 30-39

PC with ISDN modem set for 64kbps data service, or Group 4 fax.

Valid MSN number: 60-69

Note! No. 61 is preprogrammed for the RS-232 port, and no. 62 for the USB port.

PC with ISDN modem for 56kbps ISDN data service.

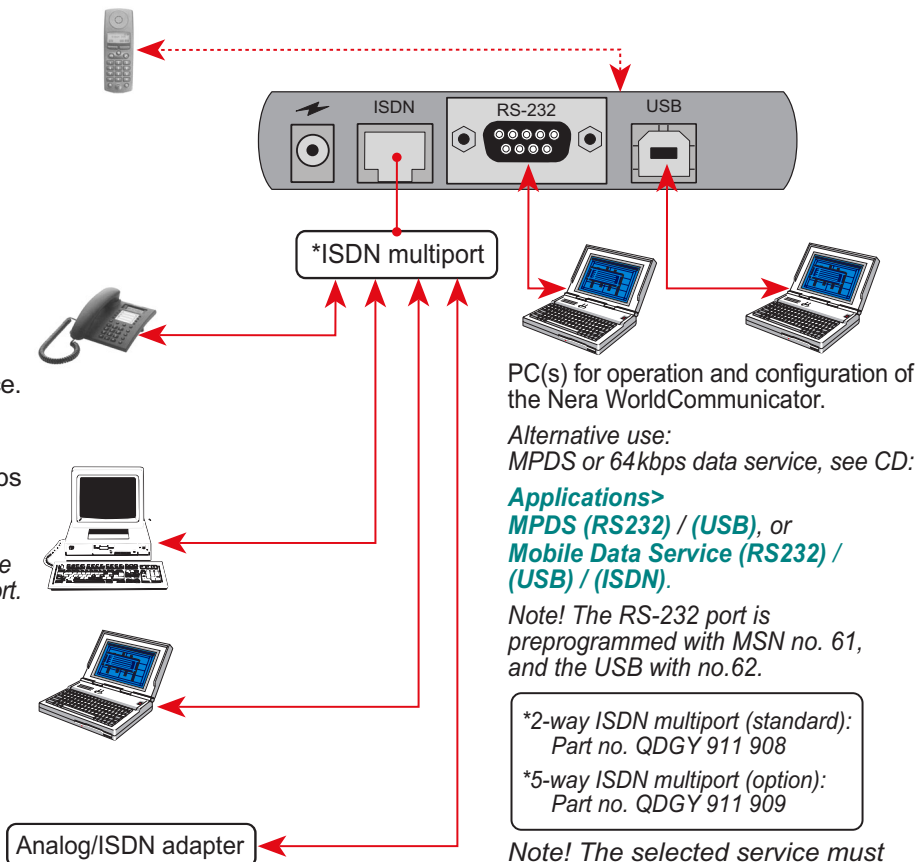
Valid MSN number: 50-59

Analog equipment set for 3.1 kHz audio service (64kbps).

Valid MSN number: 40-49

For 4.8kbps service:

Valid MSN number: 20-29



PC(s) for operation and configuration of the Nera WorldCommunicator.

Alternative use:

MPDS or 64kbps data service, see CD:

Applications>

MPDS (RS232) / (USB), or Mobile Data Service (RS232) / (USB) / (ISDN).

Note! The RS-232 port is preprogrammed with MSN no. 61, and the USB with no.62.

*2-way ISDN multipoint (standard):
Part no. QDGY 911 908

*5-way ISDN multipoint (option):
Part no. QDGY 911 909

Note! The selected service must be the same at the other end.



Routing of incoming calls

When applying the Net service provider for IMN numbers, the corresponding **Terminal Ids** (OID/DID) are normally provided.

If not programming the Terminal Id and the corresponding MSN into the WorldCommunicator, all peripheral devices with the appropriate service will respond to incoming calls.

To make an incoming call reach a particular device, an MSN number and the Terminal Id “connected” to the IMN number must be programmed into the Modem Unit. The same MSN number must then be programmed into the device.

The table below lists valid MSN numbers for the available services for ISDN and DECT devices.

Numbers to be programmed:

<i>In ISDN/DECT device:</i>	<i>In Modem Unit:</i>
MSN number	MSN number and Terminal Id <i>(the Terminal Id is paired with a specific IMN number)</i>

For an easy start, the first Terminal Id and MSN number have been preprogrammed into the Modem Unit (marked with a star in the table).

In the *4.8 and 64 kbps speech* table the Term.Id is represented by an X, allowing an ISDN Term.Id or a DECT Term.Id to be used as required.

Note! A Term.Id that already has been entered for DECT or ISDN is not accepted.

LIST OF VALID TERMINAL IDs AND MSN NUMBERS

DECT PHONE			ISDN PORT (PHONE)				ISDN/RS-232/USB PORTS		ISDN PORT			
<i>4.8/64 kbps speech</i>			<i>4.8kbps speech</i>		<i>64kbps speech</i>		<i>64kbps data</i>		<i>3.1kHz audio</i>		<i>56kbps data</i>	
Term.Id/4.8	Term.Id/64	MSN	Term.Id	MSN	Term.Id	MSN	Term.Id	MSN	Term.Id	MSN	Term.Id	MSN
X	9X	01	1*	20*	91*	30*	51*	60*	61*	40*	71*	50*
X	9X	02	X	21	9X	31	52*	61*	62	41	72	51
X	9X	03	X	22	9X	32	53*	62*	63	42	73	52
X	9X	04	X	23	9X	33	54	63	64	43	74	53
X	9X	05	X	24	9X	34	55	64	65	44	75	54
X	9X	06	X	25	9X	35	56	65	66	45	76	55
X	9X	07	X	26	9X	36	57	66	67	46	77	56
X	9X	08	X	27	9X	37	58	67	68	47	78	57
X	9X	09	X	28	9X	38	59	68	69	48	79	58
X	9X	10					<i>51/60, preset for ISDN port 52/61, preset for RS-232 port 53/62, preset for USB port</i>		<i>3.1kHz/ 64kbps audio service</i>			
X	9X	11										
X	9X	12										


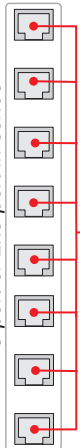
























* Preprogrammed

Routing of incoming calls (examples)

The table below illustrates the use of appropriate Terminal Ids for the various services combined with examples of incoming IMN numbers.

* Preprogrammed, see table on previous page.

Note! If the Net service provider does not specify which Terminal Id should be used with the various IMN numbers, select Term. Id no. 1 for the first 4.8 kbps telephone, then no. 2 for the second phone. Use the same principle for the other type services. It is advisable to note down the selections.

Name		Service	Multi-port	NWC ports	Provided by ISP:	
					Term.Id	IMN
Linda	MSN 20* 	4.8 kbps speech	8-port or 2x5-port in series 		1*	762420510 
John	MSN 21 	4.8 kbps speech			2	762420511 
Jane	MSN 30* 	64 kbps speech			91*	602420512 
Paul	MSN 31 	64 kbps speech			92	602420513 
FaxGr.4	MSN 60* 	64 kbps data			51*	602420514 
Data	MSN 63 	64 kbps data			54	602420515 
FaxGr.3/TA	MSN 40* 	3.1/64 audio			61*	602420518 
Peter/TA	MSN 41 	3.1/64 audio			62	602420519 
Data	MSN 61* 	64 kbps data			52*	602420515 
Router	MSN 62* 	64 kbps data			53*	602420516 
Chris	MSN 01 	4.8 kbps speech		DECT	3	762420517 

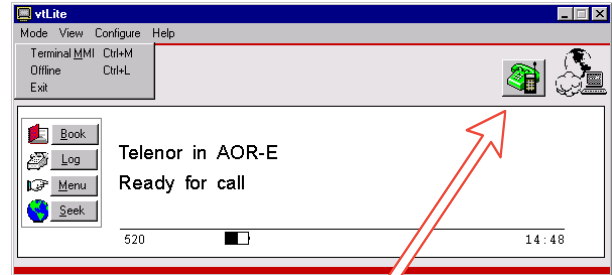


Device manager

The Device Manager is used for the following purposes:

- enable/add a DECT telephone handset
- add an ISDN telephone
- change serial port (COM) settings
- change USB port settings
- group incoming call response

You are prompted to enter the owner level password (default: 1234567890). For security, the password should be changed before or after configuration of the ISDN device. See [ACCESS LEVEL > Changing owner level password](#).



Click to open Device Manager for configuration of ISDN and DECT > > > > >

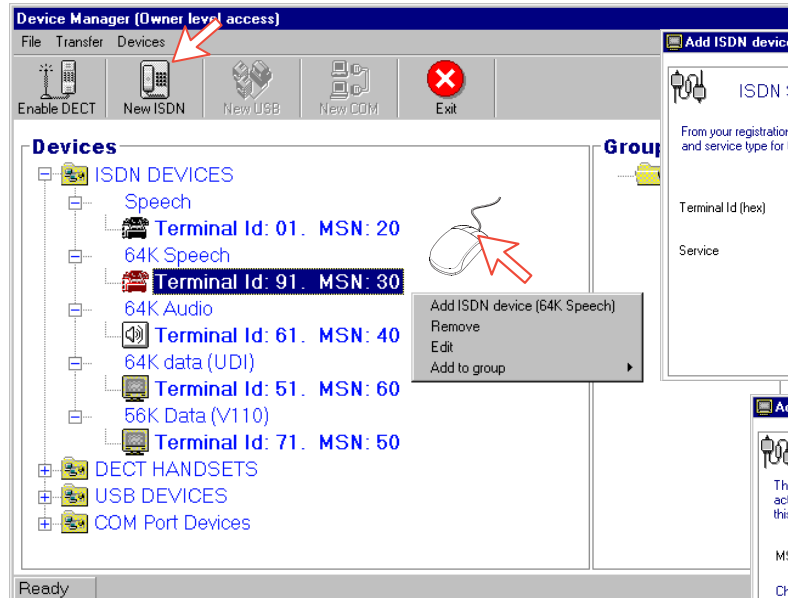
ISDN MSN configuration

Open device manager.

Click **New ISDN** to open the **Add ISDN device** wizard, or right-click a device for adding, removal, editing or grouping.

If required click **Devices > Print** to open the **Printout Viewer** for output to printer or file.

Note! The MSN number must also be programmed into the ISDN device, see **“Connecting ISDN devices”** in **Getting Started**.



The terminal Id (OID/DID) is selected automatically. The correct type of service appears:

- 4.8 kbps standard speech service
- 64 kbps speech service
- 64 kbps audio service (3.1 kHz)
- 56 kbps data service (V110)
- 64 kbps data service (UDI)

If required, select another service.

Click to continue.



Key in MSN number if not using the recommended one.

Click to enter number.

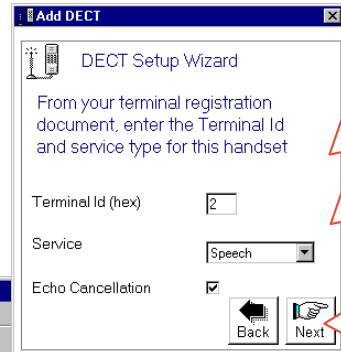
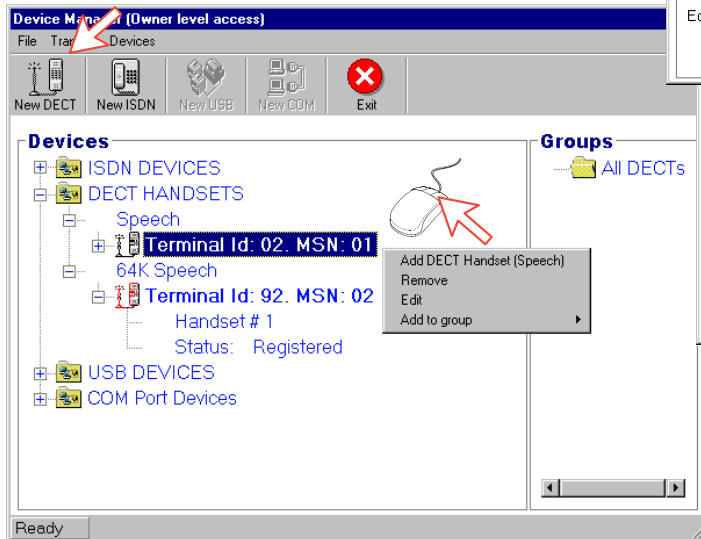


DECT MSN configuration

Open device manager, see earlier page.

Click **New DECT** to open the **Add DECT** wizard, or right-click a device for adding, removal, editing or grouping.

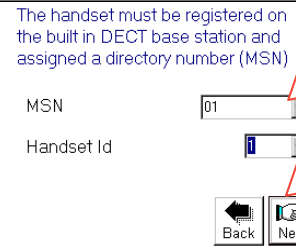
If required click **Devices > Print** to open the **Printout Viewer** for output to printer or file.



The terminal Id (OID/DID) is selected automatically. The correct type of service appears:

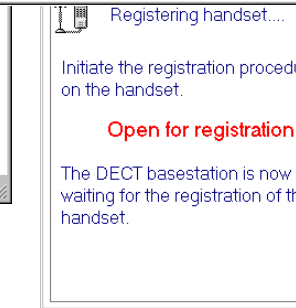
- 4.8 kbps standard speech service, or
- 64 kbps speech service

If required, select another service. Click to continue.



Enter MSN number and Handset Id if not using the recommended one.

Click to initiate linking of the handset.



To complete the registration, see: **Linking DECT handsets to the WorldCommunicator DECT base station in Getting Started.**

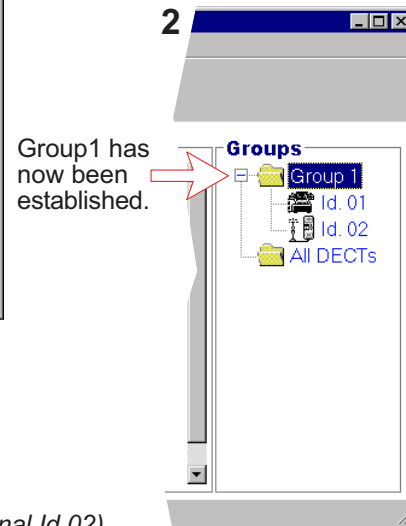
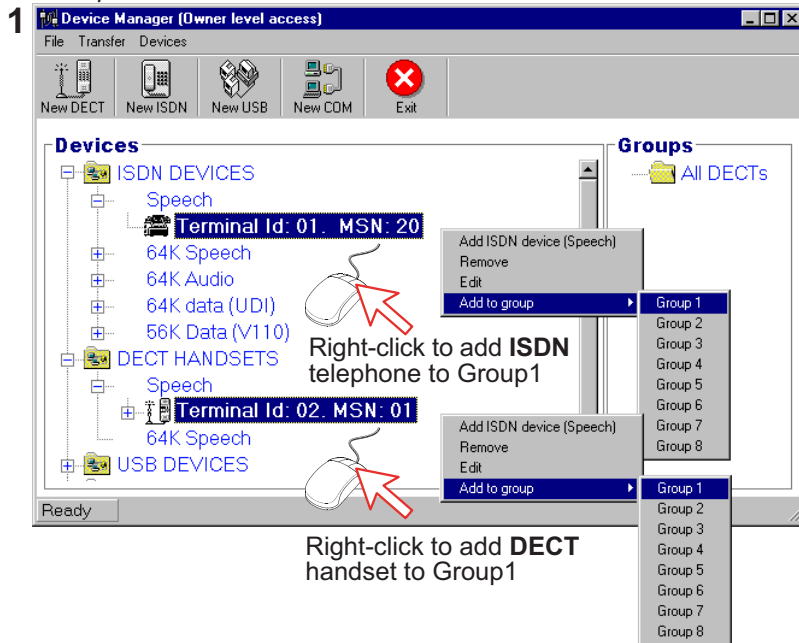
Grouping ISDN and DECT

One ISDN telephone and one DECT handset may be

set to respond to the same incoming IMN number.

Up to 8 groups may be established.

Example:



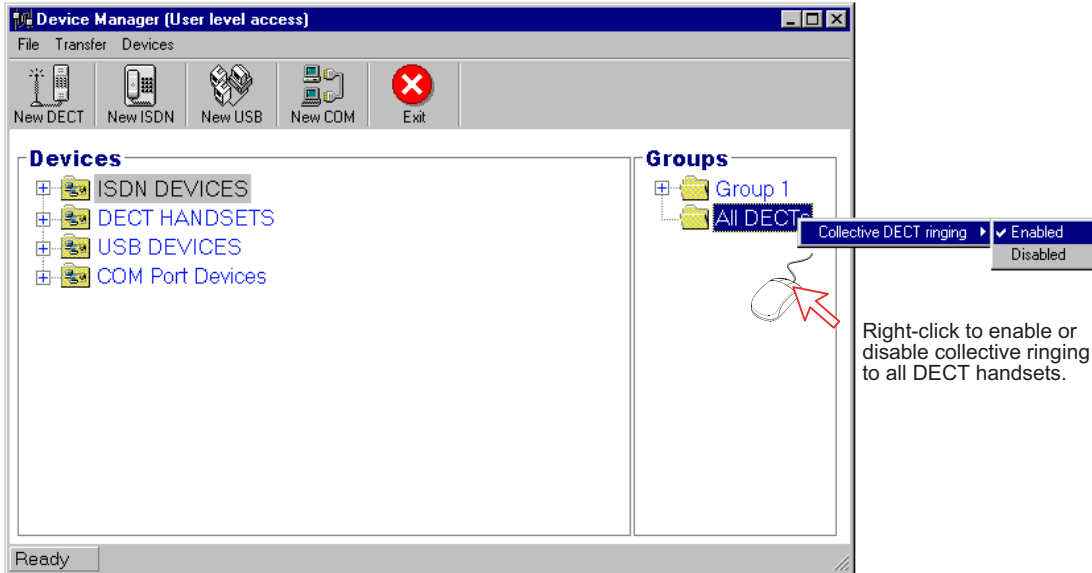
The ISDN and DECT phones will now respond to both IMNs.
 (The IMN assigned to Terminal Id 01, and the one assigned to Terminal Id 02).



Collective call to all DECT handsets

The DECT handsets may be setup to respond to the same incoming IMN number.

When enabled, collective ringing to the DECT handsets will apply to incoming calls, and to internal calls from ISDN.



Right-click to enable or disable collective ringing to all DECT handsets.



Saving and reloading

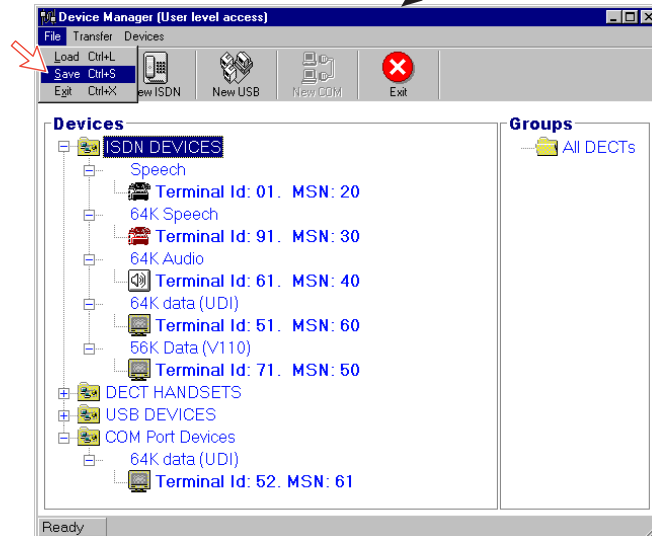
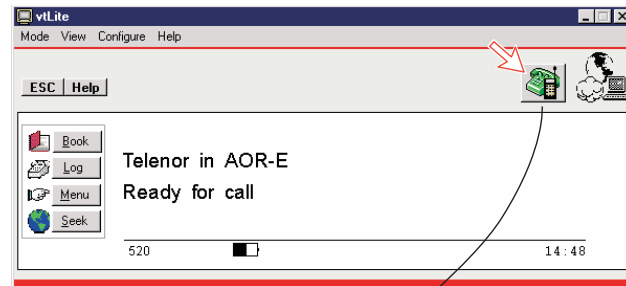
The WorldCommunicator configuration settings may be stored on the PC harddisk, f.ex. prior to replacing software.

Procedure:

- 1 Open the Device Manager window as indicated.
- 2 Clicking "Save" stores the data in the "Config.cgf".
- 3 After installing the software, the settings may be reloaded by pressing "Load".

Be aware that the DECT handsets must be relinked. See *Getting Started: [Linking DECT handsets to the WorldCommunicator DECT base station.](#)*

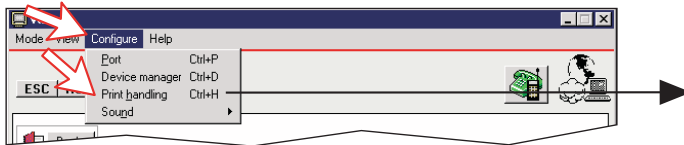
Note! The settings may also be printed out by clicking Devices > Print. See next page for print setup.





Setup

The **Printout from modem** window is used for setting of default output of Traffic log, Modem configuration etc.



Clicking **Configure > Print handling** opens the **Printout from modem** window. The following settings are selectable:

Default print action:

Normally, choose **Print to screen** which causes the file to be output via the Printout viewer. *For an example, see "TRAFFIC LOG > Printout viewer".*

For direct printout, choose **Print to default windows printer**.

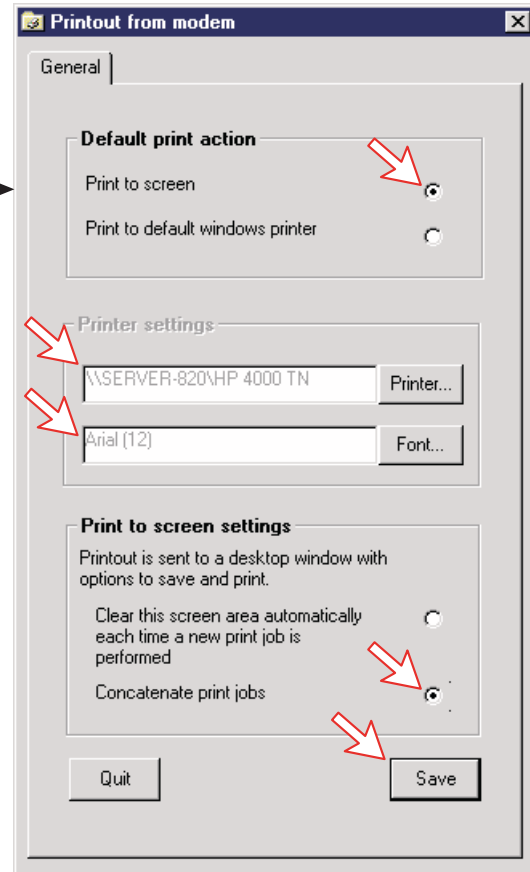
Print to screen settings:

Determines the output of records via the Printout viewer. Normally, use **Concatenate print jobs** which "chains" the jobs to be printed or saved to file.

The alternative choice clears the screen after each printout.

Printer settings:

For hardcopy printout, make sure that the appropriate printer and font are selected.



Back to Start Page 

Nera ASA

Nera SatCom AS

Bergerveien 12, PO Box 91
N-1375 Billingstad, Norway
Tel: +47 67 24 47 00
Fax: +47 67 24 46 21

www.nera.no

NERA 
enabling a wireless future