



DATACRYPTOR™ 2000 IP

Encryptor

Datacryptor™ 2000 IP Delivers Standards-Based Security

Datacryptor™ 2000 IP acts as a security gateway, encrypting IP packets and securely connecting as many as 1,000 destinations to provide privacy for all of the LAN resources at those 1,000 locations. Available today with 10BaseT Ethernet interfaces, a 10/100 Mbps version is planned for release in 2002. Its standard encryption algorithm is Triple DES; optional algorithms including Rijndael (the Advanced Encryption Standard) are available as digitally-signed software upgrades. The Datacryptor™ 2000 can use custom and national algorithms, including the Embattle algorithm at UK Enhanced Grade.

Packet-level encryption is performed as specified in IPsec for both Transport and Tunnel modes.

Flexibility To Match Your Security Needs

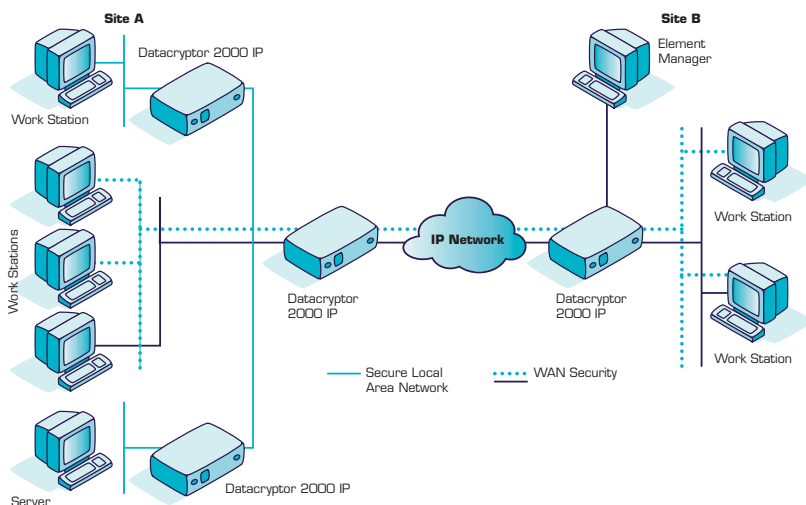
When used to protect a site, the Datacryptor™ 2000 IP is typically installed between the protected LAN resources and the router that provides wide area access for the site. To protect an individual workstation or network segment, the Datacryptor™ 2000 IP can be installed between that workstation or network segment and the rest of the network. The ability to install the Datacryptor™ between any LAN segment and the remainder of the network allows protection to be brought as close to the source of information as your security policy requires. It also allows multiple virtual private networks to be established over a shared internetwork.

Soft-Loadable Algorithms and Protocols Make the Datacryptor™ Future-Proof!

The Datacryptor™ 2000 IP is the world's first IP encryptor that can be software upgraded with Rijndael, the Advanced Encryption Standard (AES).

To assure that the Datacryptor 2000 IP grows with your evolving network, the unit is designed and built to be field upgradeable if and when your requirements change.

Datacryptor™ 2000 has the flexibility to support any IP security policy, including multiple virtual private networks



Technical Specifications

Physical Interfaces	2 x 10BaseT (RJ-45 connectors)		
Network Protocols Supported	IP (RFC 791), ICMP (RFC 792)		
IP Encryption Modes	IPsec Encapsulating Security Payload (ESP [RFC 2406]) IPsec Tunnel and Transport Modes Thales Trunk IP Mode (proprietary)		
Key Management	Commercial – Automatic KEK and DEK exchange using signed Diffie-Hellman UK Enhanced Grade Unit Authentication using X.509 Certificates		
Encryption Algorithms	Standard – Triple DES 168-bit (ANSI 9.52, 168-bit key). Optional – Rijndael Advanced Encryption Standard (AES 128, 192, 256-bit) UK Enhanced Grade – Embattle Custom and National algorithms available		
Device Management	10Base T (RJ-45) or 9-pin serial port THALES Element Manager, Front Panel Viewer and Certificate Manager THALES' Crypto Manager for UKG applications SNMP Network Management		
Security Features	Tamper evident chassis Certified Hardware Random Number Generator Management Channel encrypted using same algorithm as Data Traffic		
Security Certification	FIPS 140-1 Level 3 Security Sub-System FIPS 140-1 Level 4 CESG CAPS Approved (UK Baseline and Enhanced Grade) FIPS 140-2 Level 3/4 and Common Criteria EAL 4 and 5 in progress		
Regulatory	EN60950 FCC UL and C-UL CE EN 50082-1 EN 55022		
Power	+/- 12V and +5V, less than 10.6W auto-sensing 110-240V AC/50-60 Hz external power supply		
Temperature	Operating:	5° C to 40° C (40° F to 100° F)	
	Storage:	-10° C to 60° C (14° F to 140° F)	
Relative Humidity	10% to 90% at 25° C (77° F) non-condensing, falling to 50% maximum at 40° C (100° F)		
Barometric Pressure	780 to 1100 mBar		
Physical Specifications	Height	3.5 cm (1.4")	Depth 23.0 cm (9.0")
	Width	22.0 cm (8.7")	Weight 1.8 kg (4 lbs.)

THALES

EUROPE, MIDDLE EAST, AFRICA

THALES e-SECURITY LTD.

Meadow View House
Long Crendon, Aylesbury
Buckinghamshire, HP18 9EQ, UK
Tel: +44 (0)1844 201800
Fax: +44 (0)1844 208550
e-mail: [emea.sales@thales-
esecurity.com](mailto:emea.sales@thales-
esecurity.com)

AMERICAS

THALES e-SECURITY, INC.

2200 N. Commerce Parkway
Suite 200
Weston, Florida 33326, USA
Tel: +1 888 744 4976
or: +1 954 888 6200
Fax: +1 954 888 6211
e-mail: [americas.sales@thales-
esecurity.com](mailto:americas.sales@thales-
esecurity.com)

ASIA PACIFIC

THALES e-SECURITY (ASIA) LTD.

Asia Pacific
Units 2205-06, 22/F Vicwood Plaza,
199 Des Voeux Road
Central, Hong Kong, PRC
Tel: +852 2815 8633
Fax: +852 2815 8141
e-mail: [asia.sales@thales-
esecurity.com](mailto:asia.sales@thales-
esecurity.com)