



Babylon META ISDN

Stand-alone Encryptor for ISDN-based Networks
Modular Design for Easy Migration

Key Features

- Encrypts data using triple-DES (112-bit) algorithm
- Enforces policies as defined by the security system administrator
- Complies with ISDN signaling standards
- Operates seamlessly between private and public networks
- Completely transparent to end-users within the secured environment

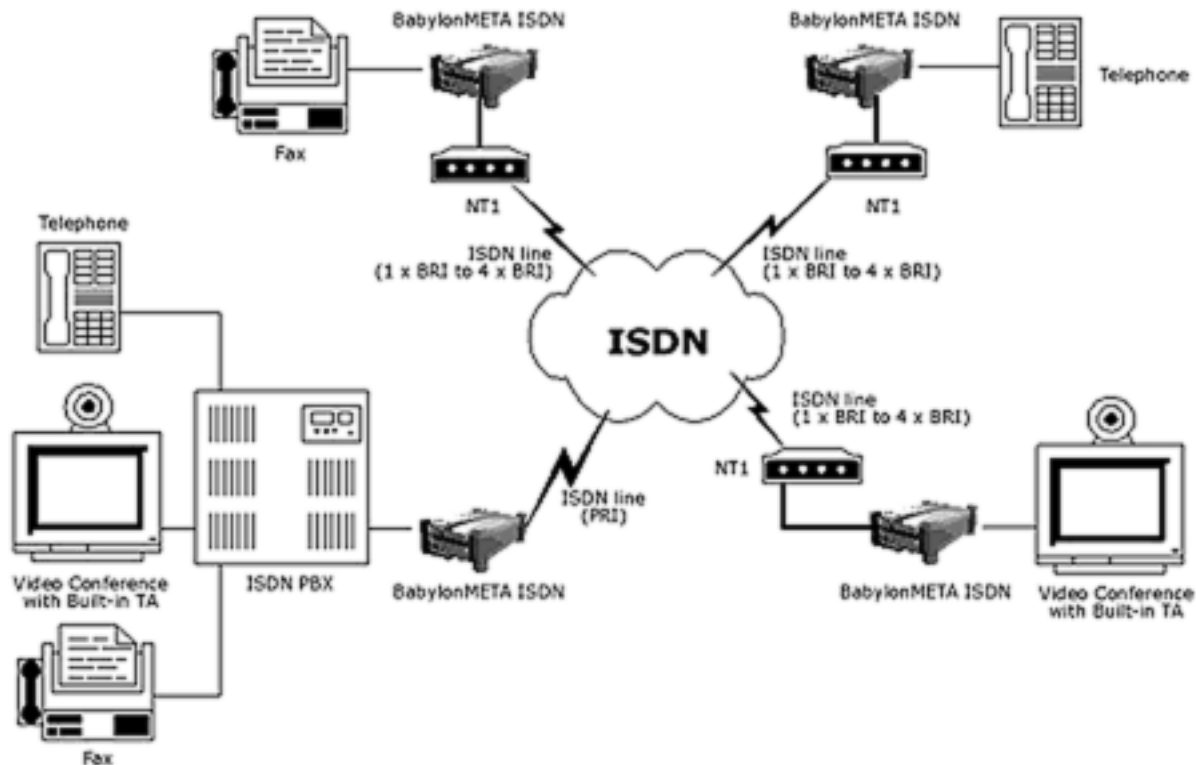


Networks and telecommunications are under attack. With frightening simplicity, every phone call or data transfer on the Internet can be monitored. After placing BabylonMETA ISDN before the switch or directly on the telephone line, you secure sensitive information by encryption. Supporting Basic Rate and Primary Rate ISDN in a variety of interface configurations, BabylonMETA ISDN protects voice, fax and video-conferencing data. Now, you can safely link your private local network to public networks with compromising security.

Due to its innovative, modular design, the encryptor allows easy migration to future technology systems. Holding a powerful CPU, encryption chip and memory, the motherboard is the basis of every BabylonMETA device. You can easily adjust it to your individual

network requirements by combining the board with different interface modules. So, when changing to another technology, you only exchange modules. Consequently, you dramatically reduce your Total Costs of Ownership.

With a central management tool, BabylonMETA ISDN ensures easy configuration. This software application allows authorized administrators to centrally manage encryption keys, install new firmware and configure devices. BabylonMETA ISDN comes with an option smart card reader for extra protection. Additionally, all of the encrypted configuration files are automatically deleted when the chassis is tampered with. Closed User Groups permit access control by only allowing connections between established, pre-approved parties.



Technical Specification (ISDN 1 to 4 x BRI / PRI)

Standards

- Independent encryption key for each circuit
- Full line-rate encryption of 1x Primary Rate to 4x Basic Rate and 1x Primary Rate.
- The Closed User Group configuration allows users to communicate exclusively within the group, preventing leakage of any sensitive information, even to would-be infiltrators equipped with other Babylons.

Key Management

- Diffie-Hellman public key management (1024-bit or 2048-bit)
- Optional chip card "Smart Card" embedded key management

Encryption

- 112-bit triple-DES in CBC (Cipher Block Chaining Mode)
- Protocol-transparent, full-duplex operation
- Data rate from 1x BRI to 4x BRI or 1x PRI (E1 or T1) G.703

Hardware Interfaces

- RJ-45 (10BaseT) port for network configuration and management
- RJ-12 port (V.24) for serial connection management

Security Management

- Stores alarm events in memory with time and date stamps
- Automatic system self test on boot-up

Physical Security

- Tamper-proof construction with chassis key lock for enhanced security. If the chassis is tampered with or opened without proper disarming, all stored encryption keys will be erased.

Network/Console Management

- Biodata Configuration Manager, a specially-designed graphically-based configuration program. This software can also be used for the remote management of other Biodata products.
- Serial interface: RJ11 to RS-232 (9-pin D-sub) cable provided. Terminal mode menu-driven configuration manager
- Compatible with commercial third party SNMP-based network management packages (e.g. HP Open View, IBM NetView, etc.), allowing the remote monitoring of any Babylon unit on the network.

Electrical/Mechanical

- 211 mm x 239 mm x 104 mm (H x W x D)
- 2 kg
- 12 VAC
- 80 to 240 VAC
- 18 W maximum power consumption
- 47-63 Hz nominal frequency

Compliance

- Compliant with EURO-ISDN, ITU-T or ANSI ISDN standards

Environmental

- 0° to 70° operating temperature
- 0 to 90 % operating humidity (non-condensing)

Regulatory Approvals

- IMC Approved
- FCC Approved



17817 Davenport Rd., Suite 225, Dallas, TX 75252 • (972) 735-0101 • Fax: (972) 735-0443
 5439 N. 22nd St., Arlington, VA 22205 • (703) 237-0016 • (703) 237-0655
 Web: www.aosusa.com • E-mail: info@aosusa.com